

Annual Report 2009



**THE
PORTLAND
FOUNDATION**



Table of Contents

1	Message from The Portland Foundation
2	2009 Highlights at a Glance, New Endowments
3	Funds of The Portland Foundation
18	2009 Grants From Unrestricted & Field of Interest Funds
19	Lilly Scholarship Recipients
20	2009 Scholarships
22	Women's Giving Circle & Friends of Jay County Agriculture
23	2009 Grants From Restricted and Designated Funds
24	2009 Donations, Memorials, and Celebrations
27	Financial View

Back Cover Board of Trustees & Staff

Message from The Portland Foundation

What a difference a year makes. The Portland Foundation's investment portfolio experienced nearly a 23% gain in 2009, after a 30% decline the prior year. Although the Foundation's ability to award grants and scholarships has been affected, we look forward to better days with more dollars going out to the Jay County community.

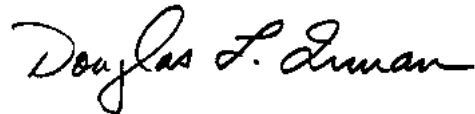
The Foundation spent a great deal of time during the past year participating in the "Jay County 20/20 Vision" project, Jay County's first-ever comprehensive strategic plan. Derek Okubo of the National Civic League of Denver, Colorado facilitated the planning process, which resulted in a roadmap for Jay County's future.

The final written plan has been presented to the community and a committee is working on prioritization and ensuring that the goals and strategies in the plan are implemented. Copies of the plan are available at the Foundation office, or you may access the electronic version at www.jaycounty2020.com.

In this report you will find evidence that the Foundation's mission - to enhance the quality of life in Jay County through endowment building, grantmaking, and community leadership - is carried out each day.



Rosalie Clamme
President, Board of Trustees



Douglas L. Inman
Executive Director

2009 Highlights at a Glance



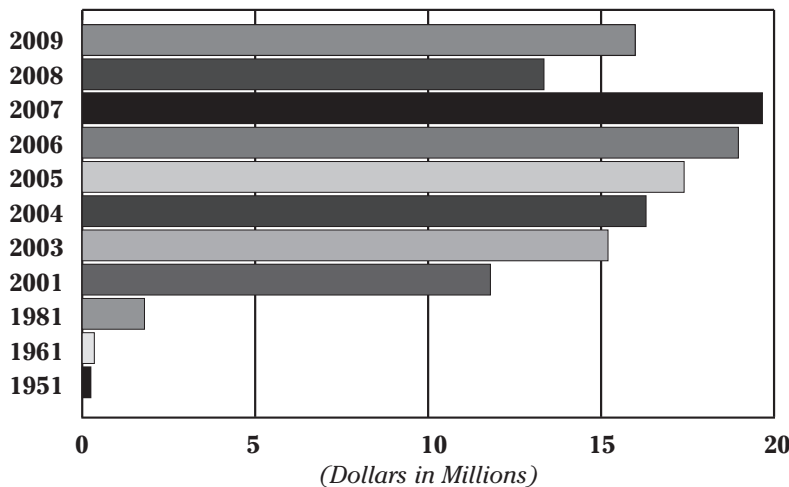
The Foundation's investment portfolio grew by 22.7%.

The Foundation's cumulative giving since 1951 for grants and scholarships exceeded \$11 million.

Five new endowment funds were established, bringing the total to 271 component funds that make up The Portland Foundation.

The Foundation participated in the Lilly Endowment Community Scholarship program for the twelfth year, with Adam Garringer and Mason Murphy named Lilly Scholars.

The Foundation's assets topped \$16.3 million at year-end.



The Portland Foundation
Assets
December 31, 2009

\$16,352,404

New Endowments

Arnold & Eugenia Beumer Scholarship Fund

Established in 2009 by Arnold and Eugenia Beumer. The purpose of the fund shall be to provide educational scholarships for graduates of Jay County High School with preference given to students pursuing a degree in an agriculture related field of study.

Blaine United Methodist Church Scholarship Fund

Established in 2009 by the Blaine United Methodist Church. The purpose of the fund is to provide educational scholarships for students enrolled in a degree program to become an ordained minister.

Phil and Linda Frantz Family Endowment Fund

Established in 2009 by Linda Frantz as an unrestricted fund in honor of her husband, Phil Frantz's 65th birthday.

New Corydon Sports Club Fund

Established in 2009 by New Corydon Sports Club, Inc. The purpose of the fund is to provide support for community functions for all age groups in New Corydon and/or Wabash Township, including but not limited to sports and recreational activities.

Norm Vinson Scholarship Fund

Established in 2009 by Toni and Joseph Vinson. The purpose of the fund is to provide educational scholarships for graduates of Jay County High School with preference given to residents of Pennville, Indiana.

Funds of The Portland Foundation

The Foundation is made up of many endowments, or “funds.” Each was established with a separate, simple agreement. Although pooled for investment purposes to benefit from economies of scale, each fund is accounted for separately.

You can establish your own fund or add to an existing endowment in The Portland Foundation. Gifts of any size can be added at any time. The Foundation currently administers 271 funds.

ADMINISTRATIVE FUNDS

Funds have been established to provide support of the administrative expense of the Foundation.

50th Anniversary Administrative Endowment \$32,987

Established in 2001 by the Foundation board with gifts received in honor of The Portland Foundation’s 50th Anniversary.

Ann H. Goodrich Administrative Endowment \$76,174

Established in 1999 by Ann H. Goodrich, philanthropist and civic leader. The fund is to provide support for the operation of the Foundation.

Administrative Endowment First Merchants Bank \$312,148

Established in 1999 through matching funds from Lilly Endowment’s GIFT III Initiative. The fund is to provide support for the operation of the Foundation.

Administrative Endowment MainSource Bank \$213,871

Established in 1999 through matching funds from Lilly Endowment’s GIFT III Initiative. The fund is to provide support for the operation of the Foundation.

Hugh N. Ronald, Jr. Memorial Trust \$43,002

Established in 1983 by the Graphic Printing Company, publishers of The Commercial Review. Mr. Ronald was the former publisher and president of the firm as well as co-founder of The Portland Foundation. The fund is to assist in the administrative expense of running the Foundation.

ADMINISTRATIVE FUNDS TOTAL \$678,182

UNRESTRICTED FUNDS

Unrestricted funds enable the Foundation to respond to changes and opportunities in the community in a proactive manner. Donors who create and support these funds understand that unforeseen events and situations are inevitable, and the Foundation needs flexibility in addressing them. The donor allows the Board of Trustees the freedom to choose the grant recipients.

Abromson-Fleming Memorial Trust \$652,256
Established in 1975 by Mrs. Marian F. Abromson in memory of her father, James Fleming, a local attorney and civic leader.

James and Marian Abromson Memorial Trust \$19,000
Established in 1989 by Suzanne A. Joiner as a living memorial to her parents. Mr. and Mrs. Abromson were local business and civic leaders and both served as Foundation trustees.

Russell H. Ashton, Ruth L. Ashton and Richard W. Ashton Memorial Trust Fund First Merchants Bank \$1,133
Established in 1996 by Richard W. Ashton as a memorial to his parents. Mr. Ashton worked as a salesman and Mrs. Ashton was a homemaker.

Russell H. Ashton, Ruth L. Ashton and Richard W. Ashton Memorial Trust Fund MainSource Bank \$9,204
Established in 2006 by the will of Richard W. Ashton as a memorial to his parents and himself.

Charles A. Baird Trust \$16,954
Established in 1952 by Mr. Baird. He was the owner of the Baird Funeral Home and was one of the Foundation’s first trustees.

Charles & Helen Barrenbrugge Memorial General Charitable Trust \$86,617
Established in 2008 by the Helen Barrenbrugge Estate. The fund shall be used for general public purposes of Jay County and the surrounding community.

Carl Bimel Fund \$91,791
Established in 1980 by Mr. Bimel’s will. Mr. Bimel’s family owned the Bimel Spoke and Wheel Factory.

John and Dr. Carole Brigham Fund \$122,243
Established in 2002 by John and Carole Brigham. John is a retired banker and former Foundation trustee. Carole is a retired nursing professor at Ball State University.

William Bynum Memorial Fund \$915
Established in 2000 by Maxwell Naas through the Naas Family Charitable Endowment. Mr. Bynum was a longtime executive at Naas Foods, Inc. in Portland.



Charles A. Baird



John and Carole Brigham



Lawrence and Mary Calhoun

Lawrence H. and Mary Jane Calhoun Memorial Fund \$120,455
Established in 2007 by the Mary Jane Calhoun Estate. Mr. Calhoun was a local pharmacist for many years. He first became associated with Syphers Brothers Drug Store in 1929 and became a partner in 1950. The store later became known as Calhoun Drugs when Lawrence and his wife, Mary Jane, took over complete ownership. The store closed in 1971.

Community Enhancement Endowment Fund \$295,410
Established in 2001 by the Foundation Board with gifts received towards the Endowment's \$2 million challenge match under Lilly Endowment's GIFT V Initiative.

Phil and Linda Frantz Family Endowment Fund \$2,259
Established in 2009 by Linda Frantz as an unrestricted fund in honor of her husband, Phil Frantz's 65th birthday.

Charles W. Geeting Memorial Trust \$20,878
Established in 1976 through the will of Mr. Geeting, a Madison Township farmer who asked that his gift would especially benefit children.

General Memorial Fund First Merchants Bank \$6,704
Established in 1955 at First National Bank by the Foundation's Board of Trustees as a depository of memorial gifts made by individuals, corporations and other contributors and is used for general purposes of the Foundation.

General Memorial Fund MainSource Bank \$3,121
Established in 1955 at MainSource Bank by the Foundation's Board of Trustees as a depository of memorial gifts made by individuals, corporations and other contributors and is used for general purposes of the Foundation.



Bob and Frances Leggett

General Unrestricted Fund First Merchants Bank \$2,750
Established in 1996 at First Merchants Bank by the Foundation's Board of Trustees as a depository of gifts that are not directed to a specific fund and is used for general purposes of the Foundation.

General Unrestricted Fund MainSource Bank \$1,213
Established in 1996 at MainSource Bank by the Foundation's Board of Trustees as a depository of gifts that are not directed to a specific fund and is used for general purposes of the Foundation.



Jane & Gene Gillum

Eugene M. & Jane Anne Gillum Endowment \$6,250
Established in 2008 by Gene & Jane Gillum. The fund shall provide support to further the charitable purposes of a selected group of organizations.

Bertha and Ralph Green – Helen and Tony Saffer Memorial Trust Fund \$20,807
Established in 1999 by the will of Mrs. Saffer.

Donald A. Hall Memorial Fund \$45,212
Established in 1981 Mr. Hall's family. Mr. Hall was a former President of the Portland Forge.

Donald and Vadia Hall Fund \$1,891,116
Established in 1981 as an advised fund by Vadia Hall, daughter of Portland Foundry co-owner L. G. Holmes and widow of Donald A. Hall, former Portland Forge President and civic leader.

Lee G. and Corinne Hall Fund \$189,306
Established in 1980 by Mr. Hall as a living memorial to his wife, Corinne, a longtime civic leader. Mr. Hall, a former Portland Forge president, was also a civic leader.

Margaret and John Hardy, Jr. Fund \$14,447
Established in 2006 by Margaret Hardy as a memorial to her husband.

Barry and Elizabeth Hudson Family Fund \$137,193
Established in 2002 by Barry and Elizabeth Hudson, local civic and business leaders.

Grace Jaqua Insurance Trust \$1,726
Established in 1959 by Mrs. Jaqua, it is to be funded by proceeds from a life insurance policy upon her death. Mrs. Jaqua is a longtime civic leader and the widow of former Citizens Bank President John Jaqua, Sr.

John J. and Grace R. Jaqua Endowment Fund \$5,969
Established in 1999 upon the death of Mr. Jaqua, co-founder of the Foundation. Mr. Jaqua was the former president of Citizens Bank and a civic leader in Portland.

Bob W. & Frances M. Leggett Endowment \$301,554
Established in 2008 by the will of Bob W. Leggett. The fund shall be used for unrestricted charitable purposes.

Lilly Endowment Inc. First Merchants Bank \$542,815
Established in 1993 by the Foundation board. The trust was funded with additional money from Lilly Endowment's GIFT Initiative.

Lilly Endowment Inc. MainSource Bank \$306,296
Established in 1992 by the Foundation board. The trust was funded with additional money from Lilly Endowment's GIFT Initiative.

James E. Luginbill Memorial Fund \$1,914
Established in 2005 by The Graphic Printing Co., Inc. in memory of three-term Portland Mayor, Jim Luginbill. A World War II veteran, Mayor Luginbill spearheaded economic development efforts to bring hundreds of jobs to Jay County.

Jim and Jean Luginbill Endowment **\$23,144**
Established in 2005 by the will of Jim Luginbill.

MainSource Bank Endowment **\$16,192**
Established in 2002 by MainSource Bank. The Foundation traces its relationship with the bank back to 1951 when the first trust was established with Peoples Bank.

J. Murl and Opal (Smith) May Memorial Fund **\$24,445**
Established in 2001 by their children, Mary May Geeting, Paul M. May, Ruby May Geeting, and Ralph F. May. Mr. and Mrs. May were lifetime residents of Jay County and were Madison Township farmers. Mr. May was a community leader and served on the Jay County Fair Association Board of Directors.

Meshberger Brothers Stone Corporation Fund **\$111,060**
Established in 1997 by Meshberger Brothers Stone Corporation in honor of its employees and as a thank you to its Jay County customers.

Greg and Marianne Moser Family Fund **\$270,803**
Established in 2002 by Greg and Marianne Moser, local industrialists and civic leaders.

Maxwell N. Naas and Cornelia S. Naas Charitable Trust **\$128,262**
Established in 1984 by Mr. & Mrs. Naas, both civic leaders in the community. Mr. Naas was a former Foundation Trustee as well as former president of Naas Food.

Gladys Thomas Pearson Memorial Trust **\$8,182**
Established in 1983 by Mrs. Pearson's family as a memorial to her concern for the improvement of quality of life. Mrs. Pearson was a longtime retail clerk.

Jacquín S. Peterson Memorial Endowment **\$10,694**
Established in 2003 by James Peterson in celebration of Jackie's life as a wife and mother.

Board of Trustees Endowment **\$14,817**
Established in 2006 by The Portland Foundation's Board of Trustees as a vehicle for past and present trustees to show their financial commitment to the Foundation.

Lydia Naas Raunecker Charitable Trust **\$16,802**
Established in 1978 by Mrs. Raunecker's father, Maxwell N. Naas, in memory of his daughter who died in 1977. Mrs. Raunecker was an active community leader who worked especially with children.

Sara Haynes Ronald Fund **\$47,385**
Established in 1994 from proceeds received from the Sara E. Ronald Charitable Remainder Unitrust.

Bud and Florence (Limbert) Study Endowment **\$50,417**
Established in 2002 by Robert "Bud" Study as a memorial to his wife.

Fred M. Stultz Endowment **\$121,679**
Established in 2002 by a trust created upon Mr. Stultz's death in 1985. A Jay County native, Fred was a longtime Jay County farmer who was also active in local politics. He sold a portion of his land holdings for the creation of the Jay County Conservation Club.

Joseph T. and Marlene A. (Frahm) Suhr Memorial Fund **\$3,273**
Established in 2001 by Joseph Suhr, and his four daughters, Dawn D. Suhr Greenwood, Valerie L. Suhr Aspy, Julie B. Suhr, and Jodi M. Suhr Trippany in celebration of Marlene's life as a wife and mother.

Walter A. Suman Fund **\$15,858**
Established in 1958 by Mr. Suman's will. Walter was an employee of the Creamery Package Co., a manufacturer of wooden butter tubs in Portland.

Glen and Martina Theurer Endowment Fund **\$19,026**
Established in 2003 by Glen and Martina Theurer. Glen was a retired telephone company employee and Martina was a retired nurse.

Virgil B. and Josephine H. Thomas Memorial Fund **\$460,340**
Established in 1998 by the will of Betty Kovaluk in memory of her parents.

Katherine Louise Timmonds Memorial Fund **\$1,382**
Established in 1969 by Miss Timmonds' sister, Carrie Estelle Timmonds. Katherine was a longtime librarian in the community.

Wasmuth Memorial Fund **\$73,236**
Established in 1983 by Mr. Lou Wasmuth as a living memorial to his interest in the welfare of Portland. He was a longtime community leader and former owner of Portland Motor Parts. Lou asked that when funds were used that his wife Eula and son Alex be recognized.

J. Arthur Williams-Orville Easterday Trust **\$25,917**
Established in 1952 by the Jay Garment Company. This is one of the first two original trusts of The Portland Foundation and the first to be funded. The trust was established as a memorial to Mr. Williams and Mr. Easterday, founders of the Jay Garment Company. Both men were business and civic leaders. The trust was originally established to fund scholarships but was amended in 1978.



Fred Stultz



J. Murl and Opal (Smith) May



Joseph & Marlene Suhr



Greg and Marianne Moser



Glen & Martina Theurer



Jacquín S. Peterson

Phyllis M. Badders Williams**Endowment****\$1,003**

Established in 1999 by Maxwell Naas through the Naas Family Charitable Endowment. Mrs. Williams was a longtime friend of the Naas family.

Young Family Trust**\$8,375**

Established in 1996 by John G. and Gretchen Young in honor of John's father, R. Dwight Young, a businessman and civic leader.

UNRESTRICTED FUNDS TOTAL**\$6,369,800****FIELD OF INTEREST FUNDS**

Some donors prefer to designate broad areas of interest - education, the arts, economic development, for example - but want the Foundation to select grant recipients within the specified fields of interest.

1776 Fund**\$7,242**

Established in 2002 with proceeds from the performance of the musical "1776" to honor the one-year anniversary of the September 11, 2001 terrorist attacks on the United States. The fund is to provide support of the county's emergency service agencies.

Paul and Velma Beard Memorial**\$1,017**

Established in 1995 by Richard and Jan Arnold as a memorial to Jan's parents. Mr. & Mrs. Beard were lifelong Jay County residents who were active in the community. The fund is to provide assistance to elderly residents of Jay County.

Cincinnatus League Fund**\$6,058**

Established in 1997 by the Cincinnatus League. The fund is to provide assistance to elderly residents of Jay County.

Fund For a More Attractive Community**\$20,034**

Established in 1961 by Hugh N. Ronald, a co-founder of The Portland Foundation and executive of the Jay Garment Company. The fund is for the betterment and beautification of Portland.

Clyde E. Geeting Memorial Trust**\$74,076**

Established in 1974 by Mr. Geeting's sister, Ona M. Myers. Mr. Geeting was a Jay County teacher who deeded his farm to the Foundation. The fund is for aid to the needy as well as aid to the local library and historical facilities.

Robert M. and Frances O. Gillespie**Educational Trust****\$39,828**

Established in 2005 by the will of Frances O. Gillespie. In 1958, the Gillespies partnered with Charles and Florence Coldren and Harold and Alma Green to establish Jay County's first classes for special needs children. That class eventually grew into Jay-Randolph Developmental Services. This fund is to support the promotion of the education of retarded children.

Ralph and Bertha Green - Tony and**Helen Saffer Fund For the Elderly****\$18,200**

Established in 1998 by the will of Helen Saffer. The fund is to provide support for the elderly of Jay County.

Mel and Evelyn Hanlin - Prevention of**Cruelty to Animals Fund****\$9,488**

Established in 1994 by Mr. Hanlin, president of Hanlin Rexall Drugs. The fund is to help organizations concerned with the welfare and treatment of animals.

The Harold Rex and Kiku Hardwick**Prevention of Cruelty to Animals Fund****\$9,754**

Established in 1992 by Mrs. Hardwick as a memorial to her husband with whom she shared a love of animals. The fund is to provide support for organizations concerned with the treatment and welfare of stray and homeless animals.

William and Ruby Hudson Endowment**\$4,718**

Established in 2007 by James R. Hudson in memory of his parents. The purpose of the fund is to provide support to organizations which most positively impact the agricultural community.

Jay County Endowment for Literacy**\$7,479**

Established in 2004 by the Jay County Literacy Coalition. The purpose of the fund is to provide support to those organizations which most positively impact literacy in Jay County.

Jean Leslie Jaqua Fund**\$4,202**

Established in 1958 by the will of Mr. Jaqua, an invalid who asked that the fund provide support for handicapped children in the community.

New Corydon Sports Club Fund**\$2,869**

Established in 2009 by New Corydon Sports Club, Inc. The purpose of the fund is to provide support for community functions for all age groups in New Corydon and/or Wabash Township, including but not limited to sports and recreational activities.

Ruth Starlin Schafer Fund to**Assist Aspiring Artists****\$48,786**

Established in 1998 by C. Justin Schafer as a tribute to Ruth Starlin Schafer in recognition of her career as an artist and dedicated teacher of aspiring artists. The fund is to provide funding to those interested in advancing their education and/or experience in drawing or painting works of art.

Virgil B. and Josephine H. Thomas**Educational Fund****\$182,422**

Established in 1999 by the will of Betty Kovaluk in memory of her parents. This fund is used to support the educational programs of the Foundation, including the Care and Share Philanthropy Program for third grade, the sixth grade College Visitation, and the Teacher Creativity Mini-Grant Program.



Bill and Ruby Hudson

Joseph F. Vormohr Memorial Fund \$4,629
Established in 2000 by Joann Vormohr as a memorial to her husband, a longtime Portland physician. The fund is to provide support for the elderly.

John F. Wible Memorial Fund \$117,377
Established in 2001 by Judith L. Wible, M.D. in memory of her father, Dr. John F. Wible, a sensory impaired engineer. The purpose of the fund is to provide support for the education of sensory impaired children, including providing scholarships to Jay County High School graduates pursuing a degree in the field of Special Education, supporting the Jay School Corporation's Hearing Impaired Program, and supporting the Jay County Early Childhood Intervention Program.

FIELD OF INTEREST FUNDS TOTAL \$558,179

DONOR ADVISED FUNDS

These funds allow donors to recommend specific nonprofit organizations or programs to support, and The Foundation takes the recommendations under advisement in determining grant recipients. Donor advised funds are especially useful to donors who want to take a charitable deduction in one year and make recommendations over several years.

Inman Family Endowment \$12,303
Established in 2005 by Douglas L. and Alicia J. Inman in memory of Regina (Susie) Inman.

MDJ Donor Advised Fund \$5,246
Established in 2008 by Dean & Margie Jetter. The donors make recommendations on expenditures from this fund.

Moser Family Memorial Trust \$54,249
Established in 2003 by the family of Greg and Marianne Moser, industrial and civic leaders who were killed in a plane crash in May 2003. The fund is to provide support to those causes Greg and Marianne held dear.

Naas Family Charitable Foundation Trust \$520,823
Established in 1996 by Maxwell Naas. The donor makes recommendations on expenditures from the fund.

Patriots Remembered Fund \$1,897
Established in 2007 by the Jay School Corporation to provide support for charitable causes promoting the field of education in Jay County.

Barb Wilkinson Memorial Fund \$1,745
Established in 2005 by the Epsilon Phi Chapter of Delta Theta Tau Sorority in memory of Barb who served as the managing editor of The Commercial Review and was an active member of Jay Civic Theatre and Delta Theta Tau. This fund is to provide support for charitable causes as determined by the donor.

DONOR ADVISED FUNDS TOTAL \$596,263

RESTRICTED FUNDS

These funds give donors the ability to support specific eligible organizations. The donor may name one or more particular agencies or institutions to receive grants.

James J. and Marian F. Abromson Charitable Endowment For The Arts \$90,831
Established in 1989 by Suzanne A. Joiner in cooperation with the Indiana Educational, Cultural and Fine Arts Foundation of Fort Wayne as a memorial to her parents, recognizing their longtime interest and support of the local arts.

Anonymous Charitable Trust \$458,868
Established in 1999 by an anonymous Portland couple. The fund is to provide support for the John Jay Center for Learning.

Asbury United Methodist Church Administrative Expense Fund \$966,784
Established in 2002 to provide support for administrative expenses of Asbury United Methodist Church.

Charles & Helen Barrenbrugge Arts Place Building Fund \$44,301
Established in 2008 by the Helen Barrenbrugge Estate. The fund shall provide support to Arts Place for capital improvements including real estate and personal property maintenance and acquisition.

Charles & Helen Barrenbrugge Jay County Boys Club Building Fund \$22,150
Established in 2008 by the Helen Barrenbrugge Estate. The fund shall be to create a capital improvement fund for the Jay Community Center Boys Club.

Bryant Community Center Endowment \$3,871
Established in 1998 by the United Way of Jay County. The fund is to provide operating support for the community center.

Alwyn Carder Fund \$261,452
Established in 2004 by the will of Mr. Carder. A high school teacher for many years, Mr. Carder was also very active in preserving the history of Redkey and Jay County. This endowment fund is to provide support for the Jay County Historical Society and Museum.

Tom Casey Immaculate Conception Church Children's Fund \$5,696
Established in 1997 by Sue Casey in memory of her husband. The fund is to provide support to the church's children's choir and children's religious education.



Margie & Dean Jetter

Jack Cole Fund For Volunteers **\$5,095**
Established in 1996 by the Foundation Board of Trustees in honor of Mr. Cole and his dedication and service as the Foundation's first executive director.

Community Seasonal Decoration Endowment **\$51,805**
Established in 1998 by the Portland Area Chamber of Commerce. The fund is to provide support for the community's seasonal decorations.

Dunkirk Endowment **\$10,360**
Established in 2007 by the Foundation Board of Trustees to provide support to organizations and projects benefiting Dunkirk, Indiana.

Dunkirk Scout Cabin Endowment **\$1,941**
Established in 1998 by the United Way of Jay County. The fund is to provide operating support for the scout cabin.

Freedom Park Endowment **\$43,864**
Established in 2005 by the Foundation Board of Trustees. The purpose of the fund is to provide support for the upkeep and maintenance of Freedom Park, a veterans memorial park located in Portland.

Friends of Jay County Agriculture Endowment **\$47,197**
Established in 2007 by the Foundation Board of Trustees. The fund is to provide support to organizations which most positively impact the field of agriculture in Jay County.

Friends of Jay County Agriculture Fund **\$5,051**
Established in 2007 by the Foundation Board of Trustees. The fund is to receive contributions towards the promotion of the field of agriculture in Jay County.

Friends of the Salamonias School and Park Endowment **\$5,567**
Established in 2001 by Ralph and Mildred May. The purpose of the fund is to provide support to the Salamonias School and Park.

Glass Museum of Dunkirk Endowment **\$32,662**
Established in 1995 by the Dunkirk Public Library Board of Trustees through funds received from Dr. Donald W. Johnson in memory of his father Frank R. Johnson. Frank worked for many years as foreman of the mold shop at Indiana Glass Company. The fund is for the preservation and promotion of the Glass Museum.

Morton S. Hawkins Community Trust **\$110,999**
Established in 1992 by the transfer of an existing trust by the Jay Circuit Court. The fund is to be used to promote the general welfare of the citizens of Jay County as determined by the Board of Managers of the Hawkins Community Trust.

John J. and Nancy S. Hawkins Memorial Fund **\$13,271**
Established in 1995 by Ann H. Goodrich, a descendent of the Hawkins family. The fund is to provide support for the Jay County Historical Society.

Elizabeth A. Hudson Endowment **\$2,151**
Established in 2008 by Elizabeth Hudson. The purpose of the fund shall be to provide support for mammogram screenings for women who meet the designated criteria set forth in the fund agreement.

Jay County Boys Club Zelma Bailey Endowment **\$215,219**
Established in 2000 by the estate of Mrs. Bailey. The fund is to provide operating support for the Jay County Boys Club Community Center.

Jay County Christian Academy Endowment **\$1,382**
Established in 2007 by Barry & Elizabeth Hudson. The fund is to provide operating support for the Jay County Christian Academy.

Jay County Historical Society First Merchants Bank **\$15,710**
Established in 1995 by Robert and Roseamond Scott. The fund is to provide operating support for the Historical Society.

Jay County Historical Society MainSource Bank **\$8,250**
Established in 1995 by Miss Elizabeth A. Starbuck, sister of Foundation co-founder W. Haynes Starbuck. Elizabeth is a descendent of the Haynes family, one of Jay County's oldest families. The fund is to provide operating support for the Historical Society.

Jay County Scout Cabin Endowment **\$1,994**
Established in 1998 by the United Way of Jay County. The fund is to provide operating support for the scout cabin.

Jayland Rescue Mission Endowment **\$1,958**
Established in 1998 by the United Way of Jay County. The fund is to provide operating support for the rescue mission.

Jay-Randolph Developmental Services Ann H. Goodrich Endowment **\$136,192**
Established in 1998 by Jay-Randolph Developmental Services through a gift from Mrs. Goodrich. The fund is to provide support of on-going programs at JRDS.

Raymond and Vesta Juillerat Memorial Fund **\$10,424**
Established in 1999 by Manon and Carol Felts in memory of Carol's parents. The fund is to provide support for the West Walnut Street Church of Christ.



Elizabeth Hudson

Limberlost Swamp Remembered**Friends of the Limberlost Fund \$5,652**

Established in 2001 by Sidney and Frances Austin, Kenneth and Anna Marie Brunswick, Dwain and Sharen Michael, John and Constance Ronald, Sherry Studebaker, and Daniel and Anita Orr. The purpose of the fund is to provide support for the restoration, acquisition, beautification and maintenance of the Limberlost Territory.

Ray C. and Patricia S. McKinley Fund \$50,122

Established in 2000 by Mr. & Mrs. McKinley. The fund is to provide support to the Jay County Historical Society, the Historical Museum, and other charitable causes in the Portland community.

Meeker Family Endowment \$11,004

Established in 1999 by J. Gordon and Catherine Meeker, longtime civic leaders in Portland. The fund is to provide support for Jay-Randolph Developmental Services.

Dr. Bob Morrison Memorial Swim Fund \$4,406

Established in 2007 by Rob & Mindy Weaver in memory of Bob. The purpose of the fund is to provide support to Jay County swimming organizations, including but not limited to, the Jay County High School boys and girls swim teams, and the summer and winter swim clubs.

Museum of The Soldier**Endowment Fund \$5,556**

Established in 1997 by The Graphic Printing Co. in honor of its employees who have served in the military. The fund is to provide operating support to the museum.

Maxwell N. Naas and Cornelia S. Naas Boys Club Community Center Building Fund \$43,381

Established in 1988 as a continuing memorial of the Naas' interest in the recreational opportunities afforded the youth of Jay County through the Boys Club Community Center.

Maxwell N. Naas and Cornelia S. Naas Jay County Arts Council Fund \$43,739

Established in 1988 as a continuing memorial of the Naas' interest in the enrichment of the arts in Jay County, especially through the work of the Jay County Center for the Arts.

Catherine Ochs Trust \$38,275

Established in 1986 as a memorial to Catherine's interest in the improvement of medical care in Jay County. Catherine is a retired nurse and asked that the fund be used for the dietary needs of the hospital.

Audrey O. Kennedy and Mildred M. Smith Old White Oak and Hillside Cemetery Endowment \$2,385

Established in 1995 by Audrey O. Kennedy so that

these smaller cemeteries would not be forgotten. The fund is to provide for the care and upkeep of these cemeteries.

Pennville Community Center**Endowment \$1,786**

Established in 1998 by the United Way of Jay County. The fund is to provide operating support for the community center.

Pennville Endowment \$18,550

Established in 2008 by the Foundation Board of Trustees to provide support to organizations and projects benefiting Pennville, Indiana.

Redkey Community Center Endowment \$1,372

Established in 1998 by the United Way of Jay County. The fund is to provide operating support for the community center.

Redkey Endowment \$21,677

Established in 2008 by the Foundation Board of Trustees to provide support to organizations and projects benefiting Redkey, Indiana.

Hugh N. and Sara E. Ronald Trust \$48,135

Established in 1994 by the will of Mrs. Ronald, an active civic leader and the widow of Hugh N. Ronald, co-founder of The Portland Foundation. A lifelong patron of the arts, Sara dedicated the fund to the Jay County Arts Council.



Bob Morrison

Helen M. (Spahr) Schafer Memorial**Endowment for Jay-Randolph Developmental Services \$38,413**

Established in 1998 by C. Justin Schafer as a memorial to Helen Schafer to recognize her interest in assisting those individuals with developmental disabilities. The fund is to provide funding for programs offered by Jay-Randolph Developmental Services.

Millard J. and Mary F. (Betty) Schwartz**Endowment \$4,077**

Established in 2008 by Millard & Betty Schwartz. The purpose of the fund shall be to provide support to the Museum of the Soldier and the Jay County 4-H Council, Inc.



Millard & Mary Schwartz

Darla Stafford Endowment \$10,925

Established in 2007 by Donald & Rebecca Stafford as a memorial to their daughter. The fund is to provide support to the Pennville Volunteer Fire Department.



Darla Stafford

Julia Magill Starbuck**Memorial Collection \$3,471**

Established in 1959 by Mrs. Starbuck's husband, W. Haynes Starbuck and her children, Mr. & Mrs. William H. Starbuck and Mrs. Eleanor Wedemeier. The trust was established as a memorial to Mrs. Starbuck's painting and interest in the arts. A number of original art works were purchased and placed in the Jay County Public Library in her memory.

Benneville (Ben) D. and Millie B. Stratton
Antioch Cemetery Memorial Fund \$4,830
 Established in 1995 by Ruth Arnold and Herbert Stratton as a memorial to their parents. The fund is for the care and upkeep of Antioch Cemetery.

Richard A. Taylor, M.D.
Memorial Fund \$1,004
 Established in 2001 by Ann H. Goodrich and Marjorie L. Hammond in memory of Dr. Taylor. The purpose of the fund is to provide support to the Jay County Historical Museum.

Women's Endowment \$25,366
 Established in 2004 by the Foundation Board of Trustees. The purpose of the fund is to provide support for the Women's Giving Circle.

Women's Giving Circle Fund \$2,469
 Established in 2004 by the Foundation Board of Trustees as a nonpermanent fund to receive gifts on behalf of the Foundation's Women's Giving Circle. The mission of the Circle is to build a community of women philanthropists through the pooling of knowledge and resources for the purpose of providing grants to Jay County organizations and initiatives that address mutually agreeable issues.

Zion Evangelical Lutheran Church
Endowment \$26,496
 Established in 1999 by an anonymous gift. The fund is to provide support for the Zion Evangelical Lutheran Church.

RESTRICTED FUNDS TOTAL \$2,988,136

SCHOLARSHIP FUNDS

The donor outlines the criteria for awards to deserving students so they may pursue educational opportunities.

Albert A. and Donna Abromson
Scholarship Trust \$48,582
 Established in 1976 by the will of Mrs. Abromson as a living memorial to her husband, a local attorney, businessman and civic leader. The trust is to provide scholarship assistance to qualified graduates of Jay County High School.

Alpha Associate Chapter of Kappa
Kappa Kappa Scholarship \$10,313
 Established in 1997 by the Alpha Associate Chapter in honor of its anniversary. The fund is to provide scholarships to Jay County High School graduates.

Altrusa Scholarship \$7,679
 Established in 1993 by the Altrusa Club to provide scholarship and other financial assistance to non-traditional students.

Robert M. Anderson Scholarship Trust \$1,075
 Established in 1990 by the Jay County High School

Student Council in recognition of Mr. Anderson and his many years of service and commitment to the Jay School Corporation as teacher, principal and Dean of Students.

John L. Armantrout Science
Scholarship \$7,828
 Established in 2008 by John & Mary Armantrout. The fund shall provide scholarships for eligible Jay County High School graduates enrolled in a physical and/or biological science program.

Janet B. Arnold Memorial
Scholarship \$11,074
 Established in 2006 by Richard D. Arnold as a memorial to his wife and her life as an educator. Jan was a teacher for over 30 years. The fund is to provide scholarships to Jay County High School graduates pursuing a degree in elementary education.

Dr. Ara C. and Gay B. Badders
Scholarship \$455,783
 Established in 1998 by Gay B. Badders in memory of her husband. The fund is to provide scholarships to students majoring in medical arts or education.

Ruth Whipple Badders Scholarship \$4,932
 Established in 2007 by Patricia S. McKinley. The fund is to provide scholarships to graduates of Jay County High School who are entering either their junior or senior year in college and majoring in education.

Ferd and Miriam Badt Scholarship \$30,939
 Established in 1977 by the will of Mrs. Badt as a living memorial to her husband and herself. The Badts were owners of Mosier Department Store.

Charles Baird Scholarship Trust \$99,070
 Established in 1970 through the will of Bess M. Baird, Mr. Baird's sister. She was co-owner of the Baird Funeral Home and a civic leader.

James and Florence Baldwin
Scholarship \$64,651
 Established in 1997 by the will of Mr. Baldwin, a longtime auto salesman. Mrs. Baldwin worked for a local furniture business.

Roberta Kay Beard Memorial
Scholarship \$2,469
 Established in 1997 by the Jay County High School Earth Watch Club and Ski Club in memory of Ms. Beard, who was killed in an accident at Grand Canyon National Park. The fund is to provide scholarships to students majoring in environmental or animal science.

Howard C. Berry Trust \$398
 Established in 1978 by the East Jay Junior High School Student Council in recognition of Mr. Berry's longtime service as principal of the school.



John Armantrout



Jan Arnold



Ruth Badders

**Arnold & Eugenia Beumer
Scholarship** **\$26,173**
Established in 2009 by Arnold and Eugenia Beumer. The purpose of the fund shall be to provide scholarships for graduates of Jay County High School with preference given to students pursuing a degree in an agriculture related field of study.

**Blaine United Methodist Church
Scholarship** **\$5,082**
Established in 2009 by the Blaine United Methodist Church. The purpose of the fund is to provide educational scholarships for students enrolled in a degree program to become an ordained minister.

Eric Bricker Memorial Scholarship **\$2,808**
Established in 1999 by the Saint Mary Catholic Church. Eric was killed in an auto accident just weeks before graduation. The fund is to provide scholarships to graduates of Jay County High School.

Alwyn Carder Fund **\$276,218**
Established in 2004 by the will of Mr. Carder. A high school teacher for many years, Mr. Carder was also very active in preserving the history of Redkey and Jay County. This scholarship is for students pursuing a degree in architecture, history or education.

Earl Cartwright Memorial Trust **\$29,152**
Established in 1956 by Ethel Cartwright in memory of her husband, an accomplished opera singer and music instructor. Mrs. Cartwright was one of the original Foundation trustees and was a founder of the Portland Forge.

Tom Casey J.C.C.T. Memorial Fund **\$1,741**
Established in 1997 by the Jay County Civic Theatre in memory of one of its longtime members. The fund is to provide scholarships to Jay County residents interested in advancing their education and/or experience in theatre, music, writing, photography or other arts-related fields.

Tom Casey Memorial Fund **\$2,322**
Established in 1997 by The Graphic Printing Co. in memory of its longtime managing editor. The fund is to provide scholarships to students studying journalism or theatre.

John L. Chitwood Scholarship Trust **\$88,122**
Established in 1968 by the will of Dr. Chitwood, a dentist in Portland for many years.

**Church Women United of Jay County
Scholarship** **\$13,763**
Established in 1989 as a result of the closing of the Church Women United Clothing Center. The fund is used for scholarship assistance for students seeking vocational training.

**Joe Scott Clark Memorial
Scholarship** **\$6,777**
Established in 1998 by John Logan in memory of Mr. Clark. The fund is to provide scholarships to Jay County High School graduates.

Orda Graves Cook Fund **\$1,956**
Established in 1970 by the will of Miss Cook, the daughter of a local insurance family.

**Kristan Danae Corwin Memorial
Scholarship** **\$14,995**
Established in 1992 by Kristan's parents, John & Kathy Corwin. Kristan was a fourth grade student when she was killed in an auto accident in 1991. The Corwins have asked that special consideration be given to students who attended Pennville Elementary School.

**Marseal T. DeWeerd, Edith T. Horn and
Virgie M. Brady Memorial
Scholarship** **\$21,051**
Established in 2001 by the will of Marseal T. DeWeerd. The purpose of the fund is to provide scholarships to Jay County High School graduates with preference to applicants from the Penn Township area.

Della Elberson Fund **\$1,585**
Established in 1967 by the will of Mrs. Elberson. She and her husband, Maurice, owned Elberson Auto Parts in Portland and were civic leaders in the community.

**Tyrus Ellingwood Memorial
Scholarship** **\$3,262**
Established in 1995 by Tyrus' parents, Raymond and Lana Ellingwood. Tyrus was killed in a motorcycle accident in 1994 just days after graduating from Jay County High School.

**Fugiett Construction Systems
Scholarship** **\$3,857**
Established in 1998 by Fugiett Construction Systems. The fund is to provide scholarships to students majoring in the Purdue University Construction Management program.

**Dr. Kathleen Galbraith Memorial
Medical Scholarship** **\$40,329**
Established in 2006 by Dr. Charlene Barton in memory of her sister. Dr. Galbraith was a physician in Portland at the time of her death. The fund is to provide scholarships to Jay County High School graduates pursuing a degree in a medical related field.

Edith Gaunt Memorial Scholarship **\$85,119**
Established in 1995 by the will of Miss Gaunt. The fund is to provide scholarship assistance to graduates of Jay County High School who reside in Dunkirk or Richland Township.



Tom Casey

**Bernice Tharp Gibble Memorial
Teachers Scholarship \$20,140**

Established in 2003 by a charitable gift annuity established in 1997 by Ms. Gibble, a retired teacher. The fund is to provide scholarships to Jay County High School graduates pursuing a degree in Secondary Education at Ball State University.

**Crystal R. and Patricia A. Gibson
Scholarship \$6,759**

Established in 2002 by Patricia Gibson in honor of her mother. The fund is to provide scholarships to Jay County High School graduates pursuing a degree in the field of nursing.

**Peggy Glentzer Memorial
Scholarship \$3,584**

Established in 1998 by Community and Family Services in memory of Mrs. Glentzer. The fund is to provide scholarships to Jay County residents pursuing a career in social work.

**Eva Moore Gordon and Ernest Moore
Scholarship \$9,347**

Established in 1984 as a living memorial to her husband and herself. Mr. Moore was an employee of Haynes Milling Co. and Eva was a retired elementary school teacher. This fund is to provide scholarships to students in the field of elementary education.

Gov. I.P. Gray Alumni Scholarship \$2,389

Established in 2006 by the Gov. I.P. Gray Alumni Association. The fund is to provide scholarships to graduates of Jay County High School with first preference given to descendants of Gray alumni.

Jeannie Habegger Scholarship \$5,471

Established in 2007 by Ted L. Habegger as a memorial to his wife. The fund is to provide scholarships to graduates of Jay County High School.

**Weldon L. and Dorothy H. Hamma
Scholarship \$30,476**

Established in 1997 by Mr. & Mrs. Hamma, longtime owners of Hamma's Grocery. Mrs. Hamma was the organist at Asbury United Methodist Church for many years. The fund is to provide scholarships to students studying music.

**James E. Hardy "Portland Panther"
Scholarship \$92,793**

Established in 1995 by James Hardy, a member of the 1945 undefeated, untied and unscored upon Panther football team.

Edward M. Haynes Scholarship \$56,636

Established in 1952 as one of the two original trusts of The Portland Foundation. The trust was established by the Haynes Milling Co. as a memorial to its founder, a business and civic leader.

**Wayne W. and Marguerite M. Hinkle
Scholarship \$109,068**

Established in 1998 by Mr. and Mrs. Hinkle. The fund is to provide scholarships to graduates of Jay County High School with priority given to students attending Indiana University.

**Frank Inman Memorial
Scholarship \$4,096**

Established in 2004 by his daughter, Kim McAbee in honor of her father. Mr. Inman was a Portland businessman and longtime youth advocate. This fund is to award a scholarship to a high school graduate who exemplifies the characteristics by which Mr. Inman led his life, with first preference given to members of the Rock Student Ministries at the Rock Missionary Church.

Inman-Myers Scholarship Trust \$6,092

Established in 1996 by Roger and Beverly Inman in honor of their parents, Lawrence and Violet Inman and Russell and Catherine Myers. The fund is to provide scholarships to students studying business at a four-year college in Indiana.

**Jay County AIDS Task Force, Inc.
Scholarship \$1,845**

Established in 2001 by the Jay County AIDS Task Force Board of Directors. The purpose of the fund is to provide scholarships to Jay County High School graduates majoring in a post-baccalaureate medical field.

**Jay County French Connection
Scholarship \$5,177**

Established in 1993 by Mrs. Tuesday Edwards, a former French teacher at Jay County High School. The scholarship is to assist students who have excelled in French while in high school and who plan to study at least one year of French in college.

Jay County FFA Memorial Fund \$94,040

Established in 1991 by the Jay County Chapter of Future Farmers of America. The fund was originally established in 1985 as a memorial to Mike A. Alig. The fund is to provide scholarships to students studying agriculture.

**Jay County High School Alumni
Association \$4,044**

Established in 2005 by the Jay County High School Alumni Association. The fund is to provide scholarships to graduates of Jay County High School.

**Jay County Hospital Auxiliary
Scholarship \$47,983**

Established in 1994 by the hospital auxiliary to provide scholarships to students pursuing a degree in a health related field.



Frank Inman



Russell and
Catherine
Myers



Jeannie
Habegger

**Jay Lodge #87 Free and Accepted Masons,
F. Edward and Marcelle Smith
Scholarship \$19,854**

Established in 2001 by the will of F. Edward Smith. The purpose of the fund is to provide scholarships to graduates of Jay County High School who are descendants of Jay Lodge #87 Free and Accepted Masons members.

Clarence O. Jelleff Scholarship \$60,048

Established in 1975 through the will of Mr. Jelleff, a longtime farmer in Bearcreek Township.

F. Dale Jordan Scholarship \$11,187

Established in 1997 by the will of Helen Jordan as a memorial to her husband, owner of Jordan Excavating. The fund is to provide scholarships to students studying mechanical trades and nursing.

**Knights of Pythias Red Cross
Lodge #88 Scholarship \$16,125**

Established in 1998 by the Knights of Pythias Red Cross Lodge #88. The fund is to provide scholarships to descendants of lodge members.

**Melissa D. "Missy" Lee Memorial
Scholarship \$5,541**

Established in 2001 by her husband, Larry A. Lee in memory of Missy, a math teacher and girls basketball coach at Union City Community High School. The purpose of the fund is to provide scholarships to Union City Community High School graduates pursuing a degree in education.

**Ernest & Martha Loy Memorial
Scholarship \$8,324**

Established in 2004 by their sons, Gary and Doug Loy. Longtime civic leaders, the Loys owned Ernest Loy Real Estate and Auctioneering. The fund is to provide scholarships to students from Jay, Blackford, and Randolph counties in Indiana and Mercer County, Ohio, who were involved in extracurricular activities during high school.

Madison High School Alumni \$17,017

Established in 2000 by the Madison High School Alumni Association, the purpose is to provide scholarships to graduates of Jay County High School.

**Robert & Helen Brown McCreery
Scholarship \$9,162**

Established in 2000 by Mr. & Mrs. McCreery. Bob is a retired engineer with Portland Forge and Helen is a retired schoolteacher. The fund is to provide scholarships to Jay County High School graduates attending Purdue University majoring in either engineering or computer science.

**Elizabeth R. McCurdy Memorial
Scholarship \$2,878**

Established in 2003 by Lori McCurdy in memory of her daughter, a nursing student. Elizabeth was driving to classes when she was killed in an auto

accident. The fund is to provide scholarships to Jay County High School graduates pursuing a degree in nursing.

**John and Imelda McKeown
Scholarship \$10,424**

Established in 1977 by Mrs. McKeown's will as a memorial to her husband and herself. Mrs. McKeown, a former Foundation trustee, and her husband, an industrialist associated with Sheller Globe Co. were longtime civic leaders.

**Ray and Samaria J. McKinley
Memorial \$60,790**

Established in 1996 by Mildred May and Ray McKinley, Jr. as a memorial to their parents. Mr. & Mrs. McKinley were both born and raised in Jay County and lived in Portland their entire married lives.

**Meshberger Brothers Stone Corp.
Scholarship \$57,745**

Established in 2004 by Meshberger Brothers Stone Corporation. The fund is to provide scholarships to graduates of Jay County High School, with priority given to children of employees of Meshberger Brothers Stone Corporation and LICA Construction Corporation, and majoring in engineering.

**Madonna Miller Memorial Teacher
Scholarship \$14,791**

Established in 1996 by Madonna Miller. The fund is to provide scholarships to students majoring in elementary education.

**Robert M. and Ruth I. Miller
Scholarship \$2,234**

Established in 2000 by Robert Miller, Sandy McGraw, and Kay Louth, husband and daughters of Mrs. Miller, as a memorial. The purpose of the fund is to provide scholarships to graduates of Jay County High School.

Maude M. Moran Scholarship \$1,120

Established in 1975 by the will of Miss Moran, an employee of the local newspaper. Miss Moran was an African-American who asked that funds be used regardless of religion or race for scholarships.

**Christine Morrow Honorary
Scholarship \$3,865**

Established in 1997 by the Epsilon Phi Chapter of Delta Theta Tau Sorority in honor of Mrs. Morrow, a charter member of the chapter. The fund is to provide scholarships to Pennville area Jay County High School graduates.

**Ashley Muhlenkamp 4-H Memorial
Scholarship \$6,558**

Established in 1993 by Roger and Linda Muhlenkamp, Ashley's parents, as a memorial to their son who was killed in an auto accident in 1993. The fund is to provide scholarships to



Melissa D.
"Missy" Lee



Ernest &
Martha Loy

students pursuing a degree in an agricultural related field.

George E. Myron Memorial Scholarship \$4,805

Established in 2004 by his wife Mildred in memory of her husband, a Jay County farmer. This fund is to provide scholarships to Jay County High School graduates who were members of Jay County 4-H.

Stephen R. Myron 4-H Supreme Achiever Scholarship \$17,467

Established in 1998 by Dr. Stephen Myron. The fund is to provide scholarships to the Jay County 4-H Club, Inc. Supreme Achiever(s).

Dorothy O'Brien Gegenheimer Odle Scholarship \$3,355

Established in 1999 by Vicki Leonard in memory of her mother, a longtime teacher in Jay and Randolph counties. The fund is to provide scholarships to graduates of Jay County High School pursuing a career in education.

C.W. Oehler Memorial Scholarship \$9,147

Established in 1998 by Nadine Miller and Marjorie Thompson in memory of their father, a local distributor for the Gulf Refining Company. The fund is to provide scholarships to graduates of Jay County High School.

Pennville Church of Christ Scholarship \$2,378

Established in 2007 by the Pennville Church of Christ to provide scholarships to residents of Jay County pursuing a higher education degree.

Jerry R. Pierce Memorial Scholarship \$407,904

Established in 2002 by Kay Pierce in memory of her husband, a local industrialist. The fund is to provide scholarships to employees and descendants of employees of W & M Manufacturing, Inc., Pier-Mac Plastics, Inc., and Accelerated Curing. Students should have attained no higher than a "C" average in their high school or G.E.D. course work to be eligible for this scholarship.

Randy O. Poole Memorial Scholarship \$31,083

Established in 1995 by Jane Poole, widow of Randy, a longtime teacher and coach at Jay County High School who was killed in an auto accident in 1995. The trust is to provide scholarships to students possessing a good mental attitude and wishing to study education.

Portland Lions Club Scholarship \$22,723

Established in 1995 by the Portland Lions Club. This fund is to provide scholarships for graduates of Jay County High School.

Portland Vocational Women's Club \$4,908

Established in 1993 by the Portland chapter of the Business and Professional Women's Club. In 1997,

the club name was changed to Portland Vocational Women's Club. The fund is to provide scholarships for graduates of Jay County High School.

Eunice R. Pray Memorial Scholarship \$7,849

Established in 2001 by the will of Mrs. Pray. The purpose of the fund is to provide scholarships to Jay County High School graduates. Mrs. Pray was a longtime schoolteacher in Illinois and Jay County.

Sheri and Nicholas Reinhart Memorial Scholarship \$16,918

Established in 1993 by Mrs. Reinhart's mother, Virginia DeHoff, as a memorial to her daughter. Sheri and her unborn son were killed in an auto accident in 1993. The fund is to provide scholarships to students pursuing a degree in education.

Kris A. Rose Memorial Scholarship \$28,441

Established in 2000 by Troy Rose, Shauna Runkle, and Heather Rose-Dunning, husband and daughters of Mrs. Rose. Kris was a businesswoman and civic leader in the community. The fund is to provide scholarships to female graduates of Jay County High School who exemplify qualities shown by Kris and have financial need.

S.D.P. Manufacturing, Inc. Scholarship \$41,883

Established in 2008 by S.D.P. Manufacturing, Inc. The fund shall provide scholarships for students who are high school graduates, with preference given to employees and descendants of employees of S.D.P. Manufacturing, Inc.

Vecil Bookout Schlechty Memorial Trust \$12,065

Established in 1974 by her husband, Leo, as a memorial to Vecil's career as a nurse. The fund is to provide scholarships to students pursuing a degree in nursing.

Catherine M. & Donald A. Schramm Scholarship \$20,058

Established in 2001 by the will of Donald Schramm. Mr. & Mrs. Schramm were teachers in the Jay County area. The purpose of the fund is to provide scholarships to graduates of Jay County High School majoring in education.

Harold E. and Maxine E. Schutz Memorial Scholarship \$8,508

Established in 1995 by Maxine as a memorial to Harold's career as an educator. Mr. Schutz was a retired teacher, principal, and activities director in the Jay County School system.

George and Sallie Schwartz Memorial Trust \$10,865

Established in 1964 by the Schwartz's daughter and son-in-law, Mr. and Mrs. Herbert Jenney. The Schwartzes were the founders of Standard Brush and Broom Co. and were longtime civic leaders.



Kris A. Rose



Jerry Pierce

Don E. Selvey Memorial Scholarship **\$2,143**
Established in 2008 by Gladys Selvey as a memorial to her husband. The fund shall provide scholarships for graduates of Jay County High School, pursuing a degree in either education or vocational arts, and have been active participants in sports at JCHS. Preference will be given to those who intend to participate in collegiate sports.

Paul B. and Ruth Schumaker Shimp Scholarship **\$21,830**
Established in 2000 by the will of Ruth Shimp. The fund is to provide scholarships to students pursuing teaching careers.

Raymond and Mary L. Shreeve Scholarship Trust **\$369,040**
Established in 1991 by Mrs. Shreeve's will. The Shreeves were longtime residents of Allen County, but Mr. Shreeve attended school in Jay County. After reading about The Portland Foundation in The Commercial Review, they decided to leave part of their estate to the Foundation.

F. Edward and Marcelle Young Smith Scholarship **\$24,421**
Established in 2001 by the will of Mr. Smith. The purpose of the fund is to provide scholarships to graduates of Jay County High School majoring in the field of business.

James H. Smith Trust **\$2,081**
Established in 1982 by Regina Smith, as a memorial to her husband, a Jay County native. The purpose of the fund is to provide scholarships to students pursuing a degree in the field of agriculture or engineering.

Helen P. Spahr Memorial Scholarship **\$15,182**
Established in 1996 by Dr. Donald Spahr as a memorial to his wife, a former dietician at Indiana University Medical Center. Mrs. Spahr, a longtime victim of Multiple Sclerosis, was known for her care of others. The fund is to provide scholarships for students studying dietetics or home economics.

Christopher Spradling Memorial Scholarship **\$10,650**
Established in 1995 by Mr. and Mrs. George Spradling as a memorial to their son who died of cancer in 1994. Chris had been accepted to attend auto tech school when he passed away. The purpose of the fund is to provide scholarships to students who have taken the vocational auto mechanics course at Jay County High School.

Starbuck Endowment **\$70,564**
Established in 1999 through a gift from the Elizabeth A. Starbuck Unitrust. The fund is to provide scholarships to graduates of Jay County High School intending to major in business, music, art or education.

Margie Nesbitt Steffy Memorial Scholarship **\$90,777**
Established in 1999 by the will of Mrs. Steffy, a Portland civic leader. The fund is to provide scholarships to graduates of Jay County High School.

Georgetta Strait Memorial Scholarship **\$5,118**
Established in 1998 by Epsilon Phi Chapter of Delta Theta Tau Sorority. The fund is to provide scholarships to Pennville area Jay County High School graduates.

William R. Sudhoff Memorial Scholarship **\$12,985**
Established in 2002 by Jim and Pat Sudhoff in memory of their son, a 1985 graduate of Jay County High School and a graduate of Indiana University. The fund is to provide scholarships to Jay County High School graduates pursuing a business degree at Indiana University Bloomington's Kelley School of Business.

Ethel Marie Schumaker Thenis Memorial Scholarship **\$36,721**
Established in 1999 by the will of Mrs. Thenis. The fund is to provide scholarships to graduates of Jay County High School.

Justin Valentine Holy Trinity Catholic Church Scholarship **\$6,550**
Established in 2007 by Mark & Marianne Valentine as a memorial to their son. The fund is to provide scholarships to high school graduates who are active members of the Holy Trinity Catholic Church, Bryant, Indiana, Catholic Youth Organization.

Norm Vinson Scholarship Fund **\$2,763**
Established in 2009 by Toni and Joseph Vinson. The purpose of the fund is to provide scholarships for graduates of Jay County High School with preference given to residents of Pennville, Indiana.

Mike Walters Student/Athlete Scholarship **\$28,577**
Established in 2003 by Mike Walters, a 1976 graduate of Jay County High School. The fund is to provide scholarships to JCHS graduates with a 3.0 or greater grade point average who have earned at least two varsity letters in athletics.

Elda Mae (Winger) Weaver Scholarship **\$11,666**
Established in 1999 by Rob Weaver in memory of his mother who was a nurse for many years. The fund is to provide scholarships to high school graduates pursuing a career in the nursing field.

Warren Wyatt Wells Memorial Scholarship **\$13,369**
Established in 2002 by Yvonne Wells in memory of her husband, a Jay County native and 1976



Don Selvey



William Sudhoff



Justin Valentine



Norm Vinson



Mike Walters



Wyatt Wells

graduate of Jay County High School. The fund is to provide scholarships to JCHS graduates.

**Westchester United Methodist Church
Scholarship \$2,840**

Established in 1994 by a member of Westchester United Methodist Church. The purpose of this advised fund is to provide scholarships to children of members of the Westchester United Methodist Church.

A. Iona Williamson Fund \$4,102

Established in 1979 by the will of Miss Williamson as a memorial to her parents, Monroe and Marie Williamson. Miss Williamson was a longtime employee of First National Bank and asked that the fund be used to provide scholarships for students of Jay County.

**Zachary Allen Wolford 4-H Memorial
Scholarship \$3,191**

Established in 2005 by Heather Binegar, Zach's mother. Zach was killed in a traffic accident before finishing his first year at Ivy Tech State College. Zach was a 10-year member of 4-H. This fund is to provide scholarships to graduates of Jay County High School, who are 10-year members of the 4-H goat project.

Margo Zielinski Memorial Scholarship \$3,890

Established in 2003 by Steve Zielinski in memory of his wife who passed away after a valiant battle with cancer. Margo was a teacher in the Jay School Corporation for 31 years. The fund is to provide scholarships to Jay County High School graduates pursuing a degree in education.

SCHOLARSHIP FUNDS TOTAL \$3,565,588

**ORGANIZATION ENDOWMENT
FUNDS**

An agency or organization creates a fund which supports its mission.

ACRES, Inc. Endowment \$23,614

Established in 2006 by ACRES, Inc. The purpose of the fund is to provide support for ACRES, Inc.

**Arts Place Endowment for the Arts
First Merchants Bank \$12,402**

Established in 1994 by the Jay County Arts Council's Board of Directors. The purpose of the fund is to provide operating support for the organization.

**Arts Place Endowment for the Arts
MainSource Bank \$11,357**

Established in 1994 by the Jay County Arts Council's Board of Directors. The purpose of the fund is to provide operating support for the organization.

**Habitat for Humanity of
Jay County, Inc. \$1,113**

Established in 2004 by the Habitat for Humanity of Jay County Board of Directors. The purpose of the fund is to provide operating support for the organization.

**Lee G. and Linda L. Hall
Endowment for the Arts \$85,853**

Established in 1993 by the Jay County Arts Council with a portion of a bequest from Mr. Hall. The fund is to provide operating support and is named in honor of Lee & Linda's support of the arts in Jay County.

Tom Hunt Endowment for the Arts \$4,392

Established in 1994 by the Jay County Arts Council in honor of Tom, a local business and civic leader who died in 1993.

Jay County Boys Club Endowment \$15,856

Established in 1993 by the Boys Club Board of Directors. The purpose of the fund is to provide operating support for the organization.

**Myron Freeman Endowment
for Jay County Boy Scouts \$17,629**

Established in 1995 by the Jay County Boy Scouts as an honor to Mr. Freeman who devoted much of his life to the Boy Scouts. The fund is to provide operating support for the organization.

Jay Community Center Endowment \$14,800

Established in 2005 by the Jay Community Center. The purpose of the fund is to provide operational support.

**Jay County Cancer Society, Inc.
Endowment Fund \$7,565**

Established in 2005 by the Jay County Cancer Society. The purpose of the fund is to support the mission of the Jay County Cancer Society.

**Jay County Crippled Children and
Adults Memorial Fund \$56,640**

Established in 1993 by the Board of Directors of the Jay County Association for Crippled Children and Adults. A portion of a bequest from Sollie Ankrom was used to establish this endowment that provides support to the organization.

**Jay County 4-H General
Endowment \$17,681**

Established in 1993 by the Jay County 4-H Council. The endowment is to provide a source of funding available to the 4-H Council for support of its programs and facilities.

Jay County Fair Association, Inc. \$30,957

Established in 1994 by the Fair Association's Board of Directors. The fund is to provide operating support.



Myron
Freeman



Margo
Zielinski

Jay County Fourth of July Committee, Inc. Endowment \$19,754
 Established in 1994 by the Committee's Board of Directors. The fund is to provide operating support as the committee helps celebrate our nation's birthday.

Jay County Historical Society Genealogy Endowment \$3,144
 Established in 2001 by the Jay County Genealogy Society, which merged with the Jay County Historical Society in 2009. The purpose of the fund is to provide support for preservation and collection of genealogy records and related programs conducted by the Jay County Historical Society.

Jay County Pee Wee Football Endowment \$20,467
 Established in 1997 by the league's Board of Directors. The fund is to provide operating support for the league.

Jay County Public Library Endowment \$101,548
 Established in 1993 by the trustees of the Jay County Public Library. The advised endowment is to provide funds to help supplement the services provided by the organization.

Jay County Public Library Second Century Fund \$13,396
 Established in 2006 by the trustees of the Jay County Public Library. The fund is to help supplement the services provided by the organization.

Jay County Scout Facilities, Inc. Endowment \$61,629
 Established in 2002 by the Jay County Scout Facilities, Inc. The fund is to provide support for the operation of the Freeman Scout Cabin.

Jay-Randolph Developmental Services, Inc. Endowment \$21,202
 Established in 1995 by the JRDS Board of Directors. The fund is to provide operating support for the organization.

Limberlost Cemetery Association Fund \$34,218
 Established in 2001 by the Limberlost Cemetery Association. The purpose of the fund is to provide support for maintenance for the historical upkeep of the Limberlost Cemetery.

Meridian Services, Inc. Endowment \$119,440
 Established in 2004 by Comprehensive Mental Health Services, Inc. The purpose of the fund is to provide support for the educational, service and charitable purpose of Meridian Services, Inc.

National Center for Great Lakes Native American Culture, Inc. Endowment \$838
 Established in 2007 by the National Center for Great Lakes Native American Culture, Inc. The fund is to provide operating support for the organization.

Jerry R. Pierce Memorial Endowment for the Arts \$9,655
 Established in 2002 by Arts Place, Inc. in honor of Mr. Pierce, a local industrialist who died in 2001.

Portland Evening Optimist Club Fund \$43,086
 Established in 1992 by the Evening Optimist Club. This fund was the first between the Foundation and a local service club. The fund is an advised fund with youth as its focus.

Portland Morning Optimist Club Fund \$23,138
 Originally established in 1989 by the Morning Optimist Club to provide funding to programs, services, and support to Jay County organizations. The advised trust was transferred to The Portland Foundation in 1993 to help carry out its purpose.

Portland Parks Endowment \$1,335
 Established in 2001 by the Portland Park Board. The purpose of the fund is to provide support for the Portland Parks.

Portland Rotary Foundation Endowment \$32,848
 Established in 1998 by the Portland Rotary Foundation. The fund is to provide support to the Portland Rotary Foundation.

United Way of Jay County, Inc. Endowment \$61,209
 Established in 1993 by the Board of Directors of the local United Way. The fund is to provide operating support for the organization.

Westchester Cemetery Fund \$7,889
 Established in 2006 by the Nancy J. Saxman 2003 Revocable Trust. The fund is to provide support for maintenance and historical upkeep of the cemetery.

West Jay Community Center Endowment \$79,883
 Established in 2000 by the West Jay Community Center Board of Directors. The fund is to provide operating support for the organization.

Youth Service Bureau of Jay County, Inc. Endowment \$19,954
 Established in 1995 by the Youth Service Bureau Board of Directors. The fund is to provide operating support for the organization.

ORGANIZATION ENDOWMENT TOTAL \$974,492

NONPERMANENT FUNDS

Freedom Park Fund \$1,021
 Established in 2004 to accept gifts for Freedom Park, which honors veterans of the United States Armed Forces.

NON PERMANENT FUNDS TOTAL \$1,021

GRAND TOTAL of FUNDS \$15,731,661

2009 Grants From Unrestricted & Field of Interest Funds

ARTS AND CULTURE **\$55,950**

Arts Place, Inc.	
Operating Support	\$ 38,500
Abromson Visual Arts Chair	\$ 10,000
Dunkirk Beautification Committee	
Webster Depot Concert Series	\$ 1,450
Jay County Fourth of July Committee	
Fourth of July Celebration	\$ 4,000
Jay County Historical Society	
Video Surveillance System	
from unrestricted funds	\$ 264
from Clyde E. Geeting Trust	\$ 1,736

COMMUNITY DEVELOPMENT **\$15,400**

John Jay Center for Learning, Inc.	
Purchase of storm windows	
from unrestricted funds	\$ 9,542
from Fund for a More Attractive	
Community	\$ 458
LEAD-ECI	
Partial scholarship for a Jay County	
resident to attend leadership training	\$ 400
Town of Bryant	
Remodeling of Bryant Town Hall	\$ 5,000

HEALTH AND HUMAN SERVICES **\$12,160**

Community & Family Services	
Heartlite energy assistance program	\$ 2,574
Jay Community Center	
Senior Citizens Programming	
from Paul & Velma Beard Trust	\$ 23
from Green-Saffer Fund for the Elderly	\$ 423
from Cincinnatus League Endowment	\$ 126
from Joseph Vormohr Fund	\$ 107
Jay County Humane Society	
Washing Machine	
from Mel & Evelyn Hanlin Prevention	
of Cruelty to Animals Fund	\$ 216
from Harold Rex & Kiku Hardwick	
Prevention of Cruelty to	
Animals Fund	\$ 222
Jay County Special Olympics	
Competition Entry Fees	
from unrestricted	\$ 1,439
from Robert & Frances Gillespie Trust	\$ 963
from Jean Leslie Jaqua Fund	\$ 98

Jay-Randolph Developmental Services	
Renovation of fitness walk	\$ 3,969
Salvation Army - Jay County Unit	
Basic human needs assistance	\$ 2,000

YOUTH **\$22,800**

Jay Community Center	
Operating Support	\$ 21,000
Website upgrade	\$ 1,800

EDUCATION **\$25,365**

John Jay Center for Learning	
Operating Support	\$ 21,000

Virgil and Josephine Thomas Education Fund Grants

Jay County Third Grade Classrooms (\$100 each)	
Care and Share Program	\$ 1,500

Teacher Creativity Mini Grants

East Elementary School	
Ms. Kathy Ayers – 5th Grade	
Exploration of Ed Pashke artwork	\$ 140

East Jay Middle School	
Ms. Amy Dillon – 6th Grade	
Mountain Math & Language Kits	\$ 250
Mr. Peter Vogler – 6th - 8th Grade	
Materials to make gourd shakers for	
“Distant Thunder of the Sacred Forest”	
Performance	\$ 250

General Shanks Elementary School	
Ms. Nora Stephens and	
Mrs. Kristin Westgerdes – Kindergarten	
Materials to make dog biscuits for	
Jay County Humane Society	
Fundraiser	\$ 100

Jay County Christian Academy	
Mr. Jerry Nichols – 7th & 8th Grade	
Egg incubator with scope	\$ 250
Ms. Kristine Wolford – 4th Grade	
6 + 1 Traits of Writing materials	\$ 250

Jay County High School	
Mr. Dennis Dwiggins, Ms. Chrissy Kreig,	
Ms. Krista Muhlenkamp – 9th Grade	
Freshman Academy “Pay it Forward”	
philanthropy project	\$ 300

Judge Haynes Elementary School
Ms. Gladys Mitchel – 2nd Grade
Pedometers for walking program
to promote wellness \$ 250

Westlawn Elementary School
Ms. LaVetha Loucks – K - 5th Grade
Drum Circle Facilitator training \$ 250

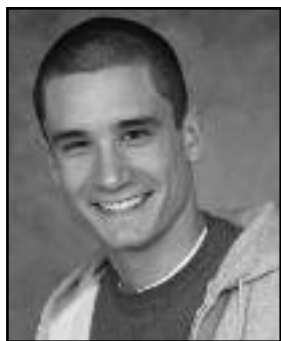
Judge Haynes Elementary School
Mr. Rex Pinkerton – 3rd Grade
Student response system which allows
greater classroom participation \$ 250

Zion Early Learning Center
Ms. Cindy Strietelmeier – Preschool
Musical instruments for Orff Schulwerk
method of music instruction \$ 250

Redkey Elementary School
Ms. Sharon Bell, Ms. Leslie Newton,
Ms. Kendra Stouder – 5th Grade
Field trip to Indianapolis Museum
of Art \$ 325

Lilly Scholarship Recipients for 2009

Two Jay County High School graduates have been named to receive full, four-year scholarships as The Portland Foundation's 2009 Lilly Endowment Community Scholars.



Adam Garringer is the son of Carmen Garringer and Mike Garringer and resides in Portland. He is attending Hanover University and studying business. Adam was ranked #13 in his class with a 3.98 GPA. He was a member of the National Honor Society, basketball team (where he was varsity captain), football team, golf team, Jay Today staff, student council, Youth for Christ, and was a senior mentor.

Mason Murphy is the son of Mitch and Anna Murphy and lives in rural Bryant. He attends Notre Dame University where he is studying biological sciences. Mason was ranked #1 in his class with a 4.03 GPA. He was a member of the National Honor Society and FFA where he received his state degree, was co-chair of the recruitment committee, and served on the soil judging team. He was also a member of Campus Life, German Club, Key Club, student council, wrestling team, junior leaders, and boy's state. He was a National Merit Scholar semi-finalist, a Bausch and Lomb Science Award recipient, and president of the student exchange club.



2009 General Scholarships

Jay County students are given the opportunity to learn at an institution of higher education through scholarship funds established by generous donors at The Portland Foundation. In 2009, 82 students received \$108,940.

RECIPIENT	SCHOLARSHIP RECEIVED
Amy Alig	Raymond & Mary L. Shreeve Scholarship
Michael Ault	F. Dale Jordan Scholarship
Shalynn Bailey	Jay County French Connection
Amanda Baldauf	Church Women United Schol.
Paige Beaty	Academic Award
Kelsey Bone	Robert & Helen Brown McCreery Scholarship
Thomas Bowen	Jerry R. Pierce Memorial Portland Morning Optimist Altrusa Scholarship
Kari Brotherton	Kristan Corwin Memorial Schol.
Jennifer Buckland	Portland Foundation Scholarship Catherine M. & Donald A. Schramm Scholarship
Abigail Bushee	John Jay Center for Learning
Stephanie Byrum	Portland Morning Optimist
Andrew Case	Adult Education Scholarship
Ashley Cosner	Jay County Hospital Auxiliary Lilly Endowment Finalist Portland Foundation Schol. Vecil Bookout Schlechty Schol. Georgetta Strait Memorial
Lindsey Current	Elda Mae (Winger) Weaver Scholarship
Alisha DeWitt	Lilly Endowment Finalist Portland Foundation Scholarship Jay County FFA Memorial
Michelle Dirksen	Lilly Endowment Finalist George E. Myron Memorial Raymond & Mary L. Shreeve Scholarship
Thomas Dunn III	Academic Award Portland Foundation Scholarship
Madeline Fennig	Inman-Myers Scholarship Jay Lodge #87 Free and Accepted Masons Scholarship
Elizabeth Franks	John Jay Center for Learning
Emily Franks	Portland Foundation Scholarship
Joseph Franks	William R. Sudhoff Memorial
Allison Fullenkamp	Janet B. Arnold Memorial
Sarah Garringer	Academic Award
Ashli Godfrey	#1 Academic Award
Kari Griffith	John Jay Center for Learning
Lauren Haggenjos	Dorothy O'Brien Gegenheimer Odle Scholarship

RECIPIENT	SCHOLARSHIP RECEIVED
Jacqueline Hein	Portland Foundation Scholarship
Caitlin Hilfiker	Madison High School Alumni Portland Foundation Scholarship F. Edward & Marcelle Young Smith Scholarship
Adam Horn	Stephen R. Myron 4-H Supreme Achiever Scholarship
Deborah Howell	John Jay Center for Learning
Megan Huftel	Adult Education Scholarship
Jennifer Hunt	Lilly Endowment Finalist Don E. Selvey Memorial Warren Wyatt Wells Memorial Scholarship Margo Zielinski Memorial
Megan Huntsman	Academic Award Weldon & Dorothy Hamma Scholarship
Alexander Ingram	Portland Foundation Scholarship Portland Morning Optimist
Dawn Johnson	John Jay Center for Learning
David Jones	Jerry R. Pierce Memorial
Amber Kaufman	Frank Inman Memorial Kris A. Rose Memorial
Tera Kelly	Robert M. Anderson Scholarship
Cassandra Laux	Lilly Endowment Finalist Portland Foundation Scholarship Harold E. & Maxine E. Schutz Memorial Scholarship
Lance Louth	Robert M. & Ruth I. Miller Scholarship Portland Foundation Scholarship
Mackenzie Loy	Ernest & Martha Loy Memorial Scholarship
Brittany Mann	Ernest & Martha Loy Memorial Scholarship
Casey Matson	Adult Education Scholarship
Douglas Mayfield	Edith Gaunt Memorial Portland Foundation Scholarship
Hanna McAbee	Frank Inman Memorial
Kyle McCabe	Jerry R. Pierce Memorial
Susan McIntire	John Jay Center for Learning
Aaron McLaughlin	Christine Morrow Scholarship Stephen R. Myron 4-H Supreme Achiever Scholarship Portland Foundation Scholarship

2009 General Scholarships

RECIPIENT	SCHOLARSHIP RECEIVED
Carrie Minnich	Portland Evening Optimist Scholarship
Gina Muhlenkamp	Inman Family Endowment Jay County FFA Memorial Scholarship Portland Foundation Scholarship Portland Morning Optimist Club Scholarship Paul B. & Ruth Schumaker Shimp Scholarship Justin Valentine Holy Trinity Catholic Church Scholarship
Lauren Murrell	Academic Award
Mason Murphy	Portland Evening Optimist Scholarship
Mallory Myers	C. W. Oehler Memorial Scholarship
Angela Nichols	John Jay Center for Learning Scholarship
Thomasina O'Conner	Lilly Endowment Finalist Portland Foundation Scholarship Sheri & Nicholas Reinhart Memorial Scholarship
Andrew Pinkerton	Alwyn Carder Scholarship
Isaac Poole	Wayne W. & Marguerite M. Hinkle Scholarship Randy O. Poole Memorial Scholarship
Amy Powell	Academic Award
Phillip Powell	Jerry R. Pierce Memorial Elda Mae (Winger) Weaver Scholarship
Matthew Price	Meshberger Brothers Stone Corp. Scholarship Portland Evening Optimist Scholarship
Kelci Reed	Portland Foundation Scholarship
Samuel Richards	Portland Morning Optimist Scholarship
April Roser	Crystal R. & Patricia A. Gibson Scholarship
Briann Saxman	Gov. I.P. Gray Alumni
Jodi Scott	John Jay Center for Learning

RECIPIENT	SCHOLARSHIP RECEIVED
Britney Shawver	Alwyn Carder Scholarship
Shayla Shirk	Madonna Miller Memorial Teacher Scholarship Portland Foundation Scholarship
Samantha Shockney	Melissa D. "Missy" Lee Memorial Scholarship
Kaitlyn Shores	Adult Education Scholarship
Dexter Shreve	Ray & Samaria J. McKinley Memorial Scholarship
Mason Shreve	Alwyn Carder Scholarship
Kyle Simmons	Alpha Associate Chapter of Tri-Kappa Scholarship Jeanne Habegger Scholarship
Ivy Simons	Portland Lions Club Scholarship Elda Mae (Winger) Weaver Scholarship
Tricia Skiver	Portland Foundation Scholarship
Esther Stephen	Eva Moore Gordon & Ernest Moore Scholarship Jay County FFA Memorial Scholarship Stephen R. Myron 4-H Supreme Achiever Scholarship
Corinne Vormohr	Academic Award Bernice Tharp Gibble Memorial Teachers Scholarship Jay Lodge #87 Free and Accepted Masons Scholarship Mike Walters Student/Athlete Scholarship
Chris Walker	Adult Education Scholarship
Brianne Wellman	Portland Foundation Scholarship
Kylie Wellman	Dr. Kathleen Galbraith Memorial Medical Scholarship Portland Foundation Scholarship
William Wellman	Academic Award
Sarah Westgerdes	James E. Hardy "Portland Panther" Scholarship Jay County FFA Memorial Scholarship Starbuck Endowment
Joshua Yoder	Portland Foundation Scholarship

WOMEN'S GIVING CIRCLE

Doing together what none of us could do alone



MISSION: To build a community of women philanthropists through the pooling of knowledge and resources for the purpose of providing grants to Jay County organizations and initiatives that address mutually agreeable issues.

2009 Officers

President - Linda Frantz
Vice-President - Cheryl Miller
Secretary - Deb Tipton

Treasurer - Linda Kennedy
Membership/Marketing Chair - Elasha Lennartz
Grantmaking Chair - Janice Durham

Fellowship Chair - Cheryl Miller
Staff Liaison - Pamela Rogers

2009 Women's Giving Circle Grant Recipients - the focus area was **Youth and Families.**

Arts Place, Inc. - \$525 towards purchase of materials for Arts in the Parks Clay Camps and Family Pottery Nights.

Jay Community Center - \$500 towards cost of publication of an activities directory.

Jay County Public Library - \$525 towards purchase of materials for 1000 Books before Kindergarten program.

State of the Heart Hospice - \$200 towards cost of Portland youth attending Camp BEARable.

2009 MEMBERSHIP

Mrs. Robin Alberson	Mrs. Carol Felts	Mrs. Marianne Horn	Mrs. Betty Sue Manor	Mrs. Jamie Smeltzer
Mrs. Annette Alexander	Mrs. Terry Fennig	Mrs. Tammy Horn	Mrs. Margaret McBride	Miss Elizabeth Starbuck
Ms. Melissa Ames	Mrs. Joy Fenters	Mrs. Marijane Houck	Mrs. Jackie McCollum	Mrs. Betty Stone
Mrs. Bonnie Badders	Mrs. Julie A. Forcum	Mrs. Elizabeth Hudson	Mrs. Gwen McDaniel	Ms. Joanna Stone
Mrs. Janet Barrett	Mrs. Jeanna Ford	Ms. Lucille Hummer	Mrs. Judy Medler	Mrs. Carol Strait
Mrs. Joyce Beck	Mrs. Linda Frantz	Ms. Jane Jackson	Mrs. Betty Miller	Mrs. Cindy Strietelmeier
Mrs. Sharon Beeler	Mrs. Robbin Fullenkamp	Ms. Becca James	Mrs. Cheryl Miller	Mrs. Janice S. Stucky
Mrs. Pam Bennett	Mrs. Louis Gelzleichter	Mrs. Margie Jetter	Mrs. Joyce Milligan	Mrs. Jane Switzer
Ms. Angie Bentz	Ms. Michele Gelzleichter	Mrs. Suzie Johanning	Mrs. Judy Milligan	Mrs. Lois Tatman
Dr. Carole Brigham	Mrs. Jane Gillum	Mrs. Phyllis Johnson	Mrs. Alice Paxson	Mrs. Meranda Teeter
Ms. Sue Bryant	Mrs. Ethelyn Glentzer	Mrs. Patty Johnston	Mrs. Carolyn Paxson	Mrs. Reda Theurer-Miller
Mrs. Jane Carlin	Ms. Jackie Goodnight	Mrs. Lola Joy	Mrs. Linda Peters	Mrs. Deb Tipton
Mrs. Rosie Clamme	Mrs. Gloria Green	Mrs. Kate Juillerat	Mrs. Bev Priest	Mrs. Phylis Upp
Mrs. Dane Coldren	Mrs. Meg Habegger	Mrs. Linda Kennedy	Ms. Mary Helen Rigby	Mrs. Alice Valentine
Mrs. Sharlette Cole	Ms. Selena Hall	Mrs. Frankie Kunkle	Mrs. Cletes Rines	Mrs. Sue Wade
Mrs. Natalie Cox	Mrs. Sharon Hammers	Ms. MaryClare Lawrence	Mrs. Pamela Rogers	Mrs. June Wendel
Mrs. Mary Davis	Mrs. Lynn Hampson	Mrs. Cathy Layman	Mrs. Jane Ann Runyon	Mrs. Ruth Ann Widman
Mrs. June Domingo	Mrs. Nelle Hampson	Mrs. Gisela LeMaster	Mrs. Pam Schemenaur	Mrs. Eva Wyrick
Ms. Frances Duke	Ms. Janet Steed Harmon	Ms. Kay LeMaster	Mrs. Cindy Schmiesing	Mrs. Gretchen Young
Mrs. Rita Dunn	Mrs. Carol Hedges	Mrs. Elasha Lennartz	Mrs. Julia Schwomeyer	Mrs. Judith Zearbaugh
Mrs. Janice Durham	Mrs. Zola Hidy	Ms. Theresa Linn	Mrs. Joy Scotten	Mrs. Loretta Zeigler
Ms. Rebecca Eley	Mrs. Becky Hinkle	Mrs. Linda Lowe	Mrs. Wilburta Shannon	Mrs. Ruth Zicht
Ms. Camille Elick	Mrs. Jeanette Hoffman	Mrs. Mim Ludy	Ms. Debbie Shreeve	Mrs. Lou Ann Zimmerman
Ms. Carol Elzey	Ms. Janet Horn	Ms. Rita Lutes	Mrs. Heather Simpson	

If you would like to be a part of the Women's Giving Circle or would like more information, please contact Pamela Rogers of The Portland Foundation at 260-726-4260 or progers@portlandfoundation.org.

FRIENDS OF JAY COUNTY AGRICULTURE

After three years, the Friends of Jay County Agriculture Endowment has grown to \$47,197 and the Friends of Jay County Agriculture Fund has a balance of \$5,051. The second year of the Harvest Hoppers Initiative raised \$11,295.

2009 DONORS

Fred Bailey
Jim & Sharon Beeler
Joe & Sharon Dues
Rick Dues
Byron & Jean Flesher
Bill & Arlene Horn
Dennis & Marianne Horn
Doug & Carla Horn
Matt & Jennifer Johnson

Ben Lyons
Dan & Lisa Lyons
Joe & Connie Lyons
Matt & Tammy Lyons
Robert C. & Joyce Lyons
Sam Lyons
Ed May
Ralph May
Greg & Shirley Miller
CJKR Muhlenkamp

Matt Muhlenkamp
Dale & Alice Pearson
RMG Farms
Rodgers Farms
Walter Brothers
Whitenack Farms -
Phil & Gary Whitenack
Dick & Loretta Ziegler

2009 Grants From Restricted and Designated Funds

ARTS AND CULTURE **\$39,056**

James J. and Marian F. Abromson Charitable
Endowment for the Arts
Arts Place Endowment for the Arts –
First Merchants Bank
Arts Place Endowment for the Arts –
MainSource Bank
Alwyn Carder Fund
Glass Museum of Dunkirk Endowment Fund
Lee G. and Linda L. Hall Endowment for the Arts
John J. and Nancy S. Hawkins Memorial Fund
Morton S. Hawkins Community Trust
Tom Hunt Endowment for the Arts
Jay County Historical Society Endowment –
First Merchants Bank
Jay County Historical Society Endowment –
MainSource Bank
Jay County Historical Society Genealogy Endowment
Jay County Public Library Endowment
Jay County Public Library Second Century Fund
Ray C. and Patricia S. McKinley Fund
Naas Family Charitable Foundation Trust
Jerry R. Pierce Memorial Endowment for the Arts
Hugh N. and Sara E. Ronald Trust
Richard A. Taylor, M.D. Memorial Fund

COMMUNITY DEVELOPMENT **\$48,554**

Asbury United Methodist Church Administrative
Expense Fund
Jack Cole Fund for Volunteers
Community Seasonal Decoration Endowment Fund
Portland Rotary Foundation Endowment Fund
United Way of Jay County, Inc. Endowment Fund
Westchester Cemetery Fund
Zion Evangelical Lutheran Church Endowment Fund

EDUCATION **\$18,286**

Anonymous Charitable Trust
Jay County Crippled Children and
Adults Memorial Fund
Naas Family Charitable Foundation Trust

HEALTH AND HUMAN SERVICES **\$10,245**

Jay-Randolph Developmental Services, Inc.
Endowment Fund
Jay-Randolph Developmental Services, Inc.
Ann H. Goodrich Endowment Fund
MDJ Donor Advised Fund
Meeker Family Endowment Fund
Helen M. (Spahr) Schafer Memorial Endowment for
Jay-Randolph Developmental Services

YOUTH **\$12,085**

Jay Community Center Endowment Fund
Jay County Boys Club Endowment Fund
Jay County Boys Club Zelma Bailey Endowment Fund
Jay County Pee Wee Football Endowment Fund
Jay County Scout Facilities, Inc. Endowment Fund
MDJ Donor Advised Fund
Maxwell N. Naas and Cornelia S. Naas Boys Club
Community Center Building Fund
Women's Endowment and Giving Circle Funds

2009 GRANTS **% of Total**

Scholarships	\$ 108,940	30
Arts & Culture	\$ 95,006	26
Community Development	\$ 63,954	17
Education	\$ 43,651	12
Youth	\$ 34,885	9
Health and Human Services	\$ <u>22,405</u>	<u>6</u>
	\$ 368,841	100%

1951 - 2009 CUMULATIVE GRANTS PAID **% of Total**

Scholarships	\$ 3,926,436	35
Arts & Culture	\$ 2,315,307	20
Community Development	\$ 2,200,927	20
Health & Human Services	\$ 1,073,750	10
Education	\$ 904,132	8
Youth	\$ <u>856,690</u>	<u>7</u>
	\$ 11,277,242	100%

2009 DONATIONS, MEMORIALS AND CELEBRATIONS

Anonymous
 Mr. & Mrs. John Armantrout
 Mr. & Mrs. Steve Arnold
 Blaine United Methodist Church
 Mr. & Mrs. John Bost
 Mr. & Mrs. John Brigham
 Cincinnatus League
 Mr. & Mrs. Bob Clamme
 Mr. & Mrs. Bill Davis
 Mr. & Mrs. Lowell Depoy
 Mr. & Mrs. Donald DeWitt
 Mr. & Mrs. Richard Eglan
 Epsilon Phi Chapter
 Delta Theta Tau
 Mr. & Mrs. Jim Forcum
 Garden Gallery



Mr. & Mrs. Harley Geesaman
 Dr. & Mrs. Gene Gillum
 Mrs. Ethelyn Glentzer
 Mr. Mark Goldman
 Goodrich Family Foundation
 Graphic Printing Company
 Ms. Tammy Hanlin
 Dr. Michael J. Hicks
 Mrs. Zoe Hill
 Ms. Carolyn Hoffacker
 Dennis & Marianne Horn
 Mr. & Mrs. Gene Horner
 Mrs. Elizabeth Hudson
 Mr. & Mrs. Roger Inman
 Ms. Janice James
 Jay County Cancer Society, Inc.
 Walk Against Cancer
 Jay County Chamber of Commerce
 Jay County Development
 Corporation
 Jay Co. High School FFA
 Jay Co. High School
 Student Council
 Jay County Historical Society
 Jay Lodge #87 F & AM
 Dean & Margie Jetter
 Dr. Donald Johnson
 Mr. & Mrs. Ron Laux
 Mr. Larry Lee
 Bob Leggett Estate
 Carter & Vicki Leonard

Mrs. Kay Louth
 Madison High School Alumni
 Maurer Family Foundation
 Mickey's Camp
 Mr. & Mrs. Ralph May
 Mr. & Mrs. Bill McAbee
 Ms. Cora May McLaughlin
 Meridian Services
 Meshberger Brothers Stone Corp.
 Mr. & Mrs. Fred Miller
 Mr. & Mrs. Greg Miller
 Madonna Miller Estate
 Mr. & Mrs. Toby Morehous
 Mr. Larry Moser
 Mr. & Mrs. Rob Moser
 Myron Farms, Stephen Myron
 New Corydon Sports Club
 Mr. Elvin Newhouse
 Pennville Fair Fund Raiser
 POET Biorefining
 Mr. & Mrs. Alan Peterson
 Portland Evening Optimist Club
 Portland Morning Optimist Club
 Portland Lions Club
 The Honorable & Mrs. Joel Roberts
 S.D.P. Manufacturing, Inc.
 Mr. & Mrs. James Schwartz
 Mr. & Mrs. Millard Schwartz
 Mrs. Gladys Selvey
 Mr. & Mrs. Jimmie Slack
 Miss Elizabeth Starbuck
 Ms. Nina Stultz
 Glen L. Theurer Estate
 Mr. & Mrs. Jerry Thornburg
 Wal-Mart Foundation
 Mr. & Mrs. Mike Walters
 Mr. & Mrs. Philip Weaver
 Mr. & Mrs. Rob Weaver
 West Jay Community Center
 Mr. & Mrs. Daniel Wheeler
 Mr. Rod Wolford
 Mr. & Mrs. John Young
 Mr. & Mrs. Jim Zimmerman

2009 MEMORIALS

**IN MEMORY OF STEPHEN
 ASHLEY, JR.**
 Jay-Randolph Developmental
 Services

**IN MEMORY OF
 WILLIAM ART BAKER**
 Ms. Sandy DeHoff
 Jim & Julie Forcum

IN MEMORY OF ARNIE BEUMER
 Mrs. Eugenia Beumer
 Coldren & Frantz Attorneys at Law
 IN Community & Rural Affairs
 Mr. & Mrs. Doug Inman

IN MEMORY OF ANNA BRIGHT
 Mr. & Mrs. Bud Wendel

IN MEMORY OF LENA CAMPBELL
 Bud & June Wendel

IN MEMORY OF NADINE COATS
 Dennis & Marianne Horn

**IN MEMORY OF
 MARJORIE COLLINS**
 Mr. & Mrs. Barry Hudson

**IN MEMORY OF
 RICHARD FARBER**
 Matt & Linda Runyon

**IN MEMORY OF RAYMOND &
 MARTHA ANNE FOREMAN**
 Alan & Sherry (Engle) Hagedorn

**IN MEMORY OF
 ROBERT FRAZEE, SR.**
 Barry & Elizabeth Hudson

IN MEMORY OF WALTER FRAZIER
 Carter & Vicki Leonard
 Carl & Pam Odle

IN MEMORY OF EVELYN FREEL
 Mr. & Mrs. John Coldren

**IN MEMORY OF
 DR. KATHLEEN GALBRAITH**
 Daniel & Charlene Barton
 Mr. Mark Wilson

IN MEMORY OF VIOLA GARBERS
 Mr. & Mrs. John Coldren

**IN MEMORY OF
 DAPHINE GOODMAN**
 Alpha Associate Chapter
 Tri-Kappa, Inc.

**IN MEMORY OF
 JEANNIE HABEGGER**
 Mr. Ted Habegger
 Mr. & Mrs. Todd Penrod

**IN MEMORY OF
 ELMA HAGENBAUGH**
 Mrs. Ethel Bennett

IN MEMORY OF PHILLIP HUDSON
 Alan & Sherry (Engle) Hagedorn

**IN MEMORY OF
 WILLIAM & RUBY HUDSON**
 Alan & Sherry (Engle) Hagedorn

**IN MEMORY OF
 MAMIE HUMPHRIES**
 Mr. & Mrs. Bud Wendel

IN MEMORY OF DAN IMEL
 Mrs. Judy Zearbaugh

IN MEMORY OF JULIE INMAN
 Alan & Sherry (Engle) Hagedorn

IN MEMORY OF RON JACKS
Portland High School Alumni
Class of 1966

IN MEMORY OF GEORGE JETTER
Mr. & Mrs. Bob Clamme
Mr. & Mrs. Dennis Horn
Mr. & Mrs. Barry Hudson
Eric & Pam Rogers

IN MEMORY OF BILLY L. KELLY
Mr. Robert Snyder

IN MEMORY OF RON KLEOPFER
Mr. & Mrs. Barry Hudson

IN MEMORY OF CODY LANNING
Mars Petcare
Mr. Mark Wilson
Mrs. Judy Zearbaugh

IN MEMORY OF MILDRED LEE
Bill & Kim McAbee

**IN MEMORY OF
GOLDIE MASTERS**
Mr. & Mrs. Richard Fifer
Mr. & Mrs. Dick Glassford
Ms. Florence Hassan
Rob, Gina, & Jordan Keesling
Mr. & Mrs. Carter Leonard
Ms. Edith Masters
Mr. & Mrs. James McKee
Mr. & Mrs. Ed Morgan
Dr. Stephen Myron
Mr. & Mrs. Carl Odle
Ms. Sandi Schock
Mr. & Mrs. Voyd Ullom
Mr. & Mrs. David White

IN MEMORY OF ROBERT McABEE
Bill & Kim McAbee
John & Emily Wiggins

**IN MEMORY OF
ELIZABETH R. McCURDY**
Steve, Betty, Colton, Matt &
Catherine Smith

**IN MEMORY OF
MADONNA MILLER**
Mr. & Mrs. Roger Bowen

**IN MEMORY OF
RAY & LOUISE MILLER**
Mr. & Mrs. Robert Snyder

**IN MEMORY OF
ORVILLE & DONNA MONROE**
Mr. Jerry Monroe

**IN MEMORY OF
GREG & MARIANNE MOSER**
Alan & Sherry (Engle) Hagedorn
Ms. Cynthia Moser

**IN MEMORY OF
ASHLEY MUHLENKAMP**
Mrs. June Study

**IN MEMORY OF
MARVIN MUHLENKAMP**
Mr. & Mrs. Charles Muhlenkamp

IN MEMORY OF TRUMAN ODLE
Carter & Vicki Leonard
Carl & Pam Odle

**IN MEMORY OF
EILEEN SETTLE RATHKE**
Mr. & Mrs. Kenneth Brunswick
Mr. & Mrs. Dale Widman

**IN MEMORY OF
SHERI & NICHOLAS REINHART**
Ms. Betty Patterson
Ms. Ilene Patterson

IN MEMORY OF JOHN RINES
Bud & June Wendel

IN MEMORY OF EVERETT RITTER
Mr. & Mrs. Douglas Inman
and Family

IN MEMORY OF KRIS ROSE
Don & Cindy Denney
Alan & Sherry (Engle) Hagedorn
Mr. & Mrs. James McKahan

**IN MEMORY OF
BARBARA RUTH SANDS**
Bob & Rosie Clamme
The Honorable & Mrs. Joel Roberts
Eric & Pamela Rogers

IN MEMORY OF RICK SANDS
Eric & Pamela Rogers

IN MEMORY OF VESTA SELLERS
Ms. Sandy DeHoff

IN MEMORY OF LILLIE L. SHEILDS
Dennis & Marianne Horn

**IN MEMORY OF
DOROTHY SHERMAN**
Gamma Alpha Chapter
Psi Iota Xi Sorority

**IN MEMORY OF
DARLA STAFFORD**
Mr. & Mrs. Donald Stafford

**IN MEMORY OF
GLENN STOOKEY**
Mr. & Mrs. Barry Hudson

IN MEMORY OF LESTER STOUT
Jay-Randolph Developmental
Services, Inc.

**IN MEMORY OF
WILLIAM SUDHOFF**
Mr. & Mrs. Brian Portteus
Mr. & Mrs. Jim Sudhoff
Mrs. Sue Sudhoff

IN MEMORY OF RICK TAYLOR
Bill & Kim McAbee

**IN MEMORY OF
HAROLD THEURER**
Mr. & Mrs. Ray Gabbard

IN MEMORY OF FERN THOMPSON
Mr. & Mrs. Bud Wendel

**IN MEMORY OF
JUSTIN VALENTINE**
Holy Trinity Golf Outing
Mr. & Mrs. Warren Lowe
Mark Valentine & Associates, Inc.
Mark & Marianne Valentine
Ms. Teresa Valentine
Ms. Elizabeth Wellman
Mr. & Mrs. Ronald Wellman

**IN MEMORY OF
MARY VALENTINE**
Mr. & Mrs. Gary Alig
Mr. & Mrs. Jim Alig
Anonymous
Mr. & Mrs. Mike Ayers
Ms. Donna Bailey
Mr. & Mrs. Bill Baldwin
Mr. & Mrs. Bill Baughn
Mr. & Mrs. Roger Bowen
Mr. & Mrs. Andrew Boyden
Mr. & Mrs. Roman Brite
Mr. & Mrs. Glen Bryant
Mr. & Mrs. Curt Compton & Family
Mr. & Mrs. Tony DeHoff
Mr. & Mrs. Kerry Johnson
Mr. & Mrs. Tom Koeneman
Mr. & Mrs. Warren Lowe
Mr. & Mrs. Dwight Martin
Mr. & Mrs. Dave McClellan
Mr. & Mrs. Bryce McLaughlin
Mr. Bill Schoenlein
Mr. Bob Schoenlein
Earl Schoenlein Family
Mrs. Sue Schoenlein
Mr. & Mrs. Gene Schmit
Mr. & Mrs. Mike Shannon
Mr. & Mrs. Doug Tipton
Alice J. Valentine Family
Mr. & Mrs. Andrew Vozoff
Mrs. Betty Wellman
Mr. & Mrs. Dennis Wellman
Mrs. Dorothy Wellman
Mr. & Mrs. Ed Wellman
Mr. & Mrs. Ronald Wellman

**IN MEMORY OF
WOODROW VALENTINE**
Dennis & Marianne Horn

**IN MEMORY OF
GILBERT VELASCO**
Dennis & Marianne Horn

IN MEMORY OF NORM VINSON

Mr. & Mrs. Rod Ashman
Mr. & Mrs. William Bauer
Mr. & Mrs. Steve Cash
Mr. & Mrs. Dave Confer
Clint & Sally Conwell
Mr. & Mrs. John Corwin
Ms. Jami Davis
Ms. Rachelle Davis
Epsilon Phi Chapter
Delta Theta Tau
Ms. Louise Gelzleichter
Ms. Becky Gerhart
Ms. Tammy Hanlin
Mr. & Mrs. Dennis Horn
Mr. & Mrs. Shane Houck
Mr. & Mrs. Carl Imel, Jr.
Jay County Chamber of Commerce
Mr. & Mrs. Richard Larsh
Mr. & Mrs. Charles McClain
Mr. & Mrs. Bruce McLaughlin
Meshberger Brothers Stone Corp.
Mr. & Mrs. Greg Miller
Mr. Larry Moser
Mr. & Mrs. Karl Olson
Mr. & Mrs. Richard Orr
Mr. Ron Paxson
Ms. Violet Paxson
Pennville Industrial
Development Corp.
Pennville Lions Club
Pennville Syndicate
Ms. Julie Penrod
Mr. Charles Porter
Ms. Lora Reed
Rock Industries, Inc.
Mr. & Mrs. Clyde Rogers
Mr. Gene Schmit
Mrs. Julie Swoveland
Mr. & Mrs. Tim Upp
Mr. Dennis Vest
Wampum Hardware Co.

**IN MEMORY OF
ELDA MAE (WINGER) WEAVER**
Mr. & Mrs. Ron Brandon
Mr. & Mrs. Rob Weaver

IN MEMORY OF DUANE WEESNER
Mr. & Mrs. Bob Snyder

IN MEMORY OF KAREN WEHRLY
Gamma Alpha Chapter
Psi Iota Xi Sorority
Mr. & Mrs. Doug LeMaster
Helen LeMaster Family
Leland LeMaster Family

**IN MEMORY OF
MADONNA WEHRLY**
Mr. & Mrs. Bill Ford
OSA Welfare Fund Custodian

IN MEMORY OF TOM WEHRLY
Carter & Vicki Leonard

IN MEMORY OF ANITA YOUNG
Alpha Associate Chapter,
Tri Kappa Inc.
Mr. & Mrs. Bud Wendel

**IN MEMORY OF
MARGO ZIELINSKI**
Alan & Sherry (Engle) Hagedorn

2009 CELEBRATIONS

IN HONOR OF ROSIE CLAMME
Employees of Jay County Public
Library

**IN HONOR OF
JOHN & LEORA ENGLE**
Alan & Sherry (Engle) Hagedorn

IN HONOR OF JULIE FORCUM
Blackford County Community
Foundation

**IN HONOR OF LINDA FRANTZ'S
BIRTHDAY**
Mr. Phil Frantz

**IN HONOR OF PHIL FRANTZ'S
65TH BIRTHDAY**
Andy, Jill, Joshua & Zachary DeHoff
Andy & Dayna Frantz
Linda Frantz

**IN HONOR
PHIL & LINDA FRANTZ'S
WEDDING ANNIVERSARY**
Mr. & Mrs. Phil Frantz

**IN HONOR OF JOYCE HAMNER'S
BIRTHDAY**
Bill & Kim McAbee

IN HONOR OF JOHN HANLIN
Mr. George Hanlin

**IN HONOR OF
BARRY & ELIZABETH HUDSON**
The Sursa Griner Group -
Charles Sursa, Stanley Griner

**IN HONOR OF
JIM & SHAUNA RUNKLE**
Don & Cindy Denney

**IN HONOR OF
ELIZABETH STARBUCK**
Alpha Associate Chapter,
Tri Kappa Inc.

**IN HONOR OF
JOHN & GRETCHEN YOUNG**
Mr. & Mrs. Tom Young

FREEDOM PARK DONORS

Mr. & Mrs. Brent Ayers
Mr. Clyde Bray
Mr. & Mrs. Gerald Dickson
Mr. & Mrs. Ernie Fifer
Mr. Charles Freel
Mr. & Mrs. Ken Hilliard
Mrs. Marjorie McFadden
Ms. Melissa O'Banion
Mr. & Mrs. Tom Page
Ms. Betty Patterson
Ms. Ilene Patterson
Portland Church of the Brethren
Mrs. Linda Rees
Mrs. Carol Schabacker
Ms. Judy Smith
Mr. Robert Study
Mr. & Mrs. Tim Upp
Mr. James Valentine
Mr. & Mrs. James Votaw
Mr. Mark Wilson



Freedom Park - Constructed in 2005, Freedom Park is dedicated to those who served in the Armed Forces of the United States of America in War and Peace.

Combined Statements of Financial Position

For the Years Ended December 31, 2009 and December 31, 2008

Assets		<u>12/31/2009</u>	<u>12/31/2008</u>
Current Assets:			
Cash and cash equivalents	\$	66,636	\$ 131,031
Cash and cash equivalents - Temporarily restricted		32,987	-
		<u>99,623</u>	<u>131,031</u>
Income tax receivable		152	296
Investments; at market - Assets held for others		26,677	-
Investments; at market - Temporarily restricted		-	-
Total current assets		<u>126,452</u>	<u>131,327</u>
Property and Equipment; at cost			
Computer hardware		19,018	19,018
Computer software		2,370	2,370
Leasehold improvements		83,678	83,678
Office furniture and fixtures		4,480	4,480
		<u>109,546</u>	<u>109,546</u>
Less: Accumulated depreciation		<u>(78,799)</u>	<u>(70,933)</u>
		30,747	38,613
Land - Freedom Park		521,234	521,234
Total property and equipment		<u>551,981</u>	<u>559,847</u>
Noncurrent Assets:			
Investments; at market - Assets held for others		696,414	638,320
Investments; at market - Permanently restricted		15,002,089	14,809,011
Investments; at cost - Permanently restricted		8	8
Life insurance - Permanently restricted		1,726	1,726
Paintings - Permanently restricted		3,471	3,471
Total noncurrent assets		<u>15,703,708</u>	<u>15,452,536</u>
Total assets	\$	<u>\$ 16,382,141</u>	\$ <u>16,143,710</u>

Liability and Net Assets

		<u>12/31/2009</u>	<u>12/31/2008</u>
Current Liabilities			
Current portion of non-current liability		23,826	23,504
Investments; at market, below historical value - Assets held for others		-	77,269
Investments; at market, below historical value - Temporarily restricted		138	2,271,390
Total current liability		<u>23,964</u>	<u>2,372,163</u>
Non-Current Liability			
Liability for assets held for others		723,091	561,051
Less: Amount to be disbursed within one year		<u>(23,826)</u>	<u>(23,504)</u>
Total non-current liability		<u>699,265</u>	<u>537,547</u>
Total liabilities		<u>723,229</u>	<u>2,909,710</u>
Net Assets:			
Unrestricted		618,769	(1,580,216)
Temporarily restricted		32,849	-
Permanently restricted		<u>15,007,294</u>	<u>14,814,216</u>
Total net assets		<u>15,658,912</u>	<u>13,234,000</u>
Total liability and net assets	\$	<u>\$ 16,382,141</u>	\$ <u>16,143,710</u> 27

Combined Statements of Activities

For the Year Ended December 31, 2009

	<u>Unrestricted</u>	<u>Temporarily</u>	<u>Permanently Restricted</u>	<u>Total</u>
<u>Revenues, Gains, and Other Support</u>				
Contributions	\$ 458	\$ 6,550	\$ 248,340	\$ 255,348
Interest and dividends	-	320,574	20	320,594
Realized gains and (losses) from investments	-	(119,119)	-	(119,119)
Unrealized gains and (losses) from investments	-	2,811,465	1,726	2,813,191
Partnership investment income	-	-	1,087	1,087
	<u>458</u>	<u>3,019,470</u>	<u>251,173</u>	<u>3,271,101</u>
Less: Contributions to assets held for others	-	-	(58,095)	(58,095)
Less: Investment loss from assets held for others	-	(120,084)	-	(120,084)
	<u>458</u>	<u>2,899,386</u>	<u>193,078</u>	<u>3,092,922</u>
Net assets released from restrictions	<u>2,866,537</u>	<u>(2,866,537)</u>	<u>-</u>	<u>-</u>
Total revenues, gains, and other support	<u>2,866,995</u>	<u>32,849</u>	<u>193,078</u>	<u>3,092,922</u>
<u>Grants, Scholarships, and Other Expenses</u>				
Grants	278,541	-	-	278,541
Scholarships	126,104	-	-	126,104
Investment management fees	25,336	-	-	25,336
Trustee fees	64,918	-	-	64,918
Unrelated business income tax	144	-	-	144
Functional expenses - per attached schedule	189,106	-	-	189,106
	<u>684,149</u>	<u>-</u>	<u>-</u>	<u>684,149</u>
Less: Disbursements from assets held for other	<u>(16,139)</u>	<u>-</u>	<u>-</u>	<u>(16,139)</u>
Total distributions and other expenses	<u>668,010</u>	<u>-</u>	<u>-</u>	<u>668,010</u>
<u>Change in Net Assets</u>	<u>2,198,985</u>	<u>32,849</u>	<u>193,078</u>	<u>2,424,912</u>
<u>Net Assets - Beginning</u>	<u>(1,580,216)</u>	<u>-</u>	<u>14,814,216</u>	<u>13,234,000</u>
<u>Net Assets - Ending</u>	<u>\$ 618,769</u>	<u>\$ 32,849</u>	<u>\$ 15,007,294</u>	<u>\$ 15,658,912</u>

How to Give Through The Portland Foundation

Donors can give to existing funds or create new ones that best serve their needs and charitable interests. Prospective donors are urged to discuss the various options listed below with their attorney, accountant or other financial advisor.

Endowment Funds

An endowment fund is a living memorial that may carry your family name. It creates a pool of charitable assets that provides enduring charitable support. Donors may choose one of five ways to have their contributions administered:

Unrestricted

The donor allows the Board of Trustees the freedom to choose the grant recipients and respond to changing needs in the community.

Field of Interest

The donor may specify a field of interest, but leaves selection of the exact recipients to the discretion of the Board of Trustees.

Restricted

The donor may name one or more particular agencies or institutions to receive grants.

Scholarship

The donor outlines the criteria for awards to deserving students so they may pursue educational opportunities.

Donor Advised

The donor may suggest possible grant recipients to the Foundation each year.

Planned Gifts Providing Lifetime Income

Planned gifts provide the benefits of charitable giving, while affording you and loved ones income from the donated assets.

Through The Portland Foundation, donors have the opportunity to preserve and strengthen the Jay County community. For information on these and other ways to use The Portland Foundation, call Doug Inman at (260) 726-4260.

Applying for Grants

The Portland Foundation encourages requests from any new or existing charitable organization or community agency in Jay County.

Grant Policies

Grant proposals must have direct relevance to Jay County charitable needs.

Areas The Portland Foundation wants to support are:

- Start-up costs for new programs
- One-time projects or needs
- Capital needs beyond an applicant organization's capabilities and means

Generally, The Portland Foundation does not support:

- Individuals, other than scholarships
- Religious or sectarian purposes
- Make-up of operating deficits, post-event or after-the-fact situations
- Endowment campaigns
- Propaganda, political or otherwise, attempting to influence legislation or intervene in any political affairs or campaigns

Requests are reviewed and voted on twice a year. Deadline dates are typically in January and July and are announced in the local media.

Ten copies of the grant proposal should be provided. Foundation staff will review the grant request and will contact the requesting organization for any additional information or clarification. Following staff review, the proposals are sent to the Board of Trustees for evaluation and funding recommendation.

Following the next regularly scheduled board meeting, applicants are informed in writing of the Board's decisions as well as any conditions placed on a grant.

2009 Board of Directors

Rosalie Clamme, President	Julie Forcum	Ron Laux
Eric Reynolds, Vice President	Dr. Dave Fullenkamp	
Mary Davis, Secretary/Treasurer	Dean Jetter	
Marianne Horn, Immediate Past President	Giles Laux	

Staff

Douglas L. Inman, Executive Director	Pamela Rogers, Administrative Assistant
--------------------------------------	---

Past Board Members

Ethel Cartwright	1952-1970	Maxwell Naas	1978-1987
Orville Bechdol	1952-1954	Marian F. Abromson	1983-1988
Joseph Burke	1952-1959	Joel Roberts	1985-1989
Charles Baird	1952-1954	Jack Ronald	1986-1996
James Abromson	1952-1976	Joann Vormohr	1987-1990
John S. Hardy, Sr.	1952-1972	Sally Naas Mauger	1988-1988
Hugh N. Ronald, Jr.	1954-1969	William W. Hinkle	1989-1998
Robert Smith	1954-1967	Stan Teeter	1989-1993
Rev. Virgil Bjork	1959-1961	Doug Milligan	1989-2002
John Bodle	1961-1976	Ruth Ann Widman	1989-2002
David Mosier	1967-1971	Gretchen Young	1991-2000
Byron Nesbitt	1969-1977	John Brigham	1993-1999
Imelda McKeown	1970-1977	Ethelyn Glentzer	1997-2001
John Coldren	1971-1985	Darrell Reeves	2000-2002
R. Dwight Young	1973-1982	Greg Moser	2000-2003
Lon Racster	1976-1989	Dr. Mark Haggenjos	2001-2007
Edna Elliott	1977-1985	Julie Barber	2003-2006
James Peterson	1977-1986	Phil Frantz	1999-2008
		Ron Freeman	1999-2008

Past Board Presidents

Charles Baird	1952-1954	Joel Roberts	1988-1989
Hugh N. Ronald, Jr.	1955-1960	Jack Ronald	1990-1994
John Hardy, Sr.	1961-1972	William W. Hinkle	1995-1996
James Abromson	1973-1976	Doug Milligan	1997-2000
Byron Nesbitt	1977-1978	Ron Freeman	2001-2002
John Coldren	1979-1982	Phil Frantz	2003-2004
Lon Racster	1983-1987	Marianne Horn	2005-2007



THE
PORTLAND
FOUNDATION

112 East Main Street
Portland, IN 47371

260-726-4260
Fax: 260-726-4273
E-mail: tpf@portlandfoundation.org
www.portlandfoundation.org

NONPROFIT ORG.
U.S. POSTAGE
PAID
PORTLAND, IN 47371
PERMIT NO. 4

Return Service Requested